



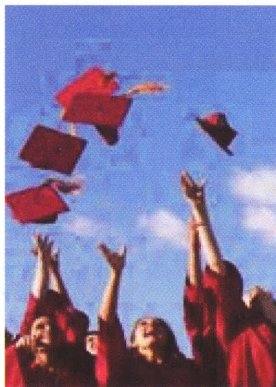
*Office of State Treasurer Timothy P. Cabill*

## COMMONWEALTH COVENANT FUND

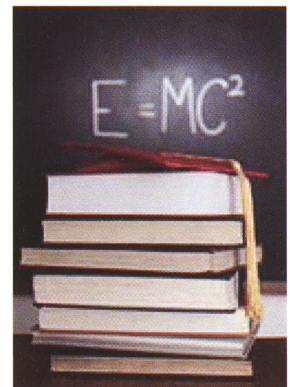
### Majoring in science, technology, engineering or math?

Thanks to the newly established Commonwealth Covenant Fund, you could be eligible to receive tuition loan repayments.

The Commonwealth Covenant Fund (CCF) is an innovative program that offers tuition loan payments to students who attend public universities or colleges in Massachusetts and stay to pursue careers in the STEM\* (science, technology, engineering and math) fields.



- ♦ Will you be a graduate of a public institution of higher education in Massachusetts?
- ♦ Did you major in science, technology, engineering or math (STEM)?
- ♦ Or are you planning to teach in a STEM area?



For more information please contact:  
Eileen Glovsky, Executive Director  
Commonwealth Covenant Fund,  
Office of the Treasurer, 1 Ashburton Place,  
12th Floor, Boston, MA 02108  
617-367-9333 x258

Email: [ccf@tre.state.ma.us](mailto:ccf@tre.state.ma.us) Website: [www.mass.gov/treasury/ccf](http://www.mass.gov/treasury/ccf)

\*See our website for a complete list of eligible majors





Massachusetts Department of Higher Education

## STEM Scholar Internship Match Fund

Science, Technology, Engineering and Math

**STEM majors!**



**How would you like to match your internship earnings?**

The Massachusetts Department of Higher Education (DHE) STEM Scholar Internship Match Fund Program provides an opportunity for students majoring in specific high need areas to apply for a match to their internship earnings.

### How does it work?

Undergraduate Massachusetts residents enrolled full time in approved STEM (science, technology, engineering or math) majors, including STEM education, at Massachusetts public colleges or universities may apply to the STEM Scholar Internship Match Program. Selected awardees will receive a match to their internship earnings up to \$5,000!

#### For additional information

To obtain an application and additional information, including deadlines and a list of eligible majors visit the DHE web site:

**[www.mass.edu/scholarintern](http://www.mass.edu/scholarintern)**

Or contact Erin Mawn, Project Coordinator for  
Workforce Development Initiatives  
[emawn@bhe.mass.edu](mailto:emawn@bhe.mass.edu) or 617.994.6910

