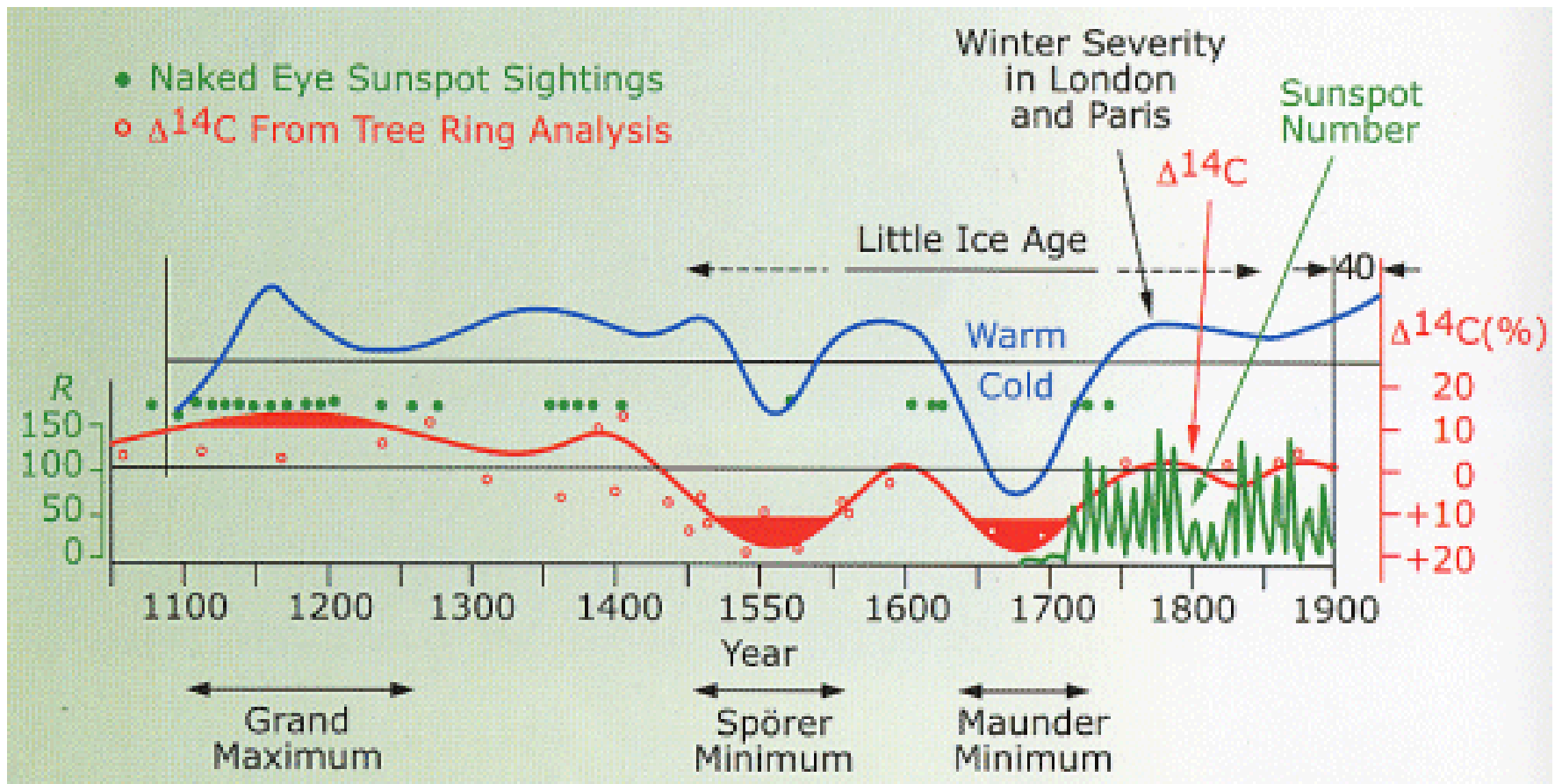
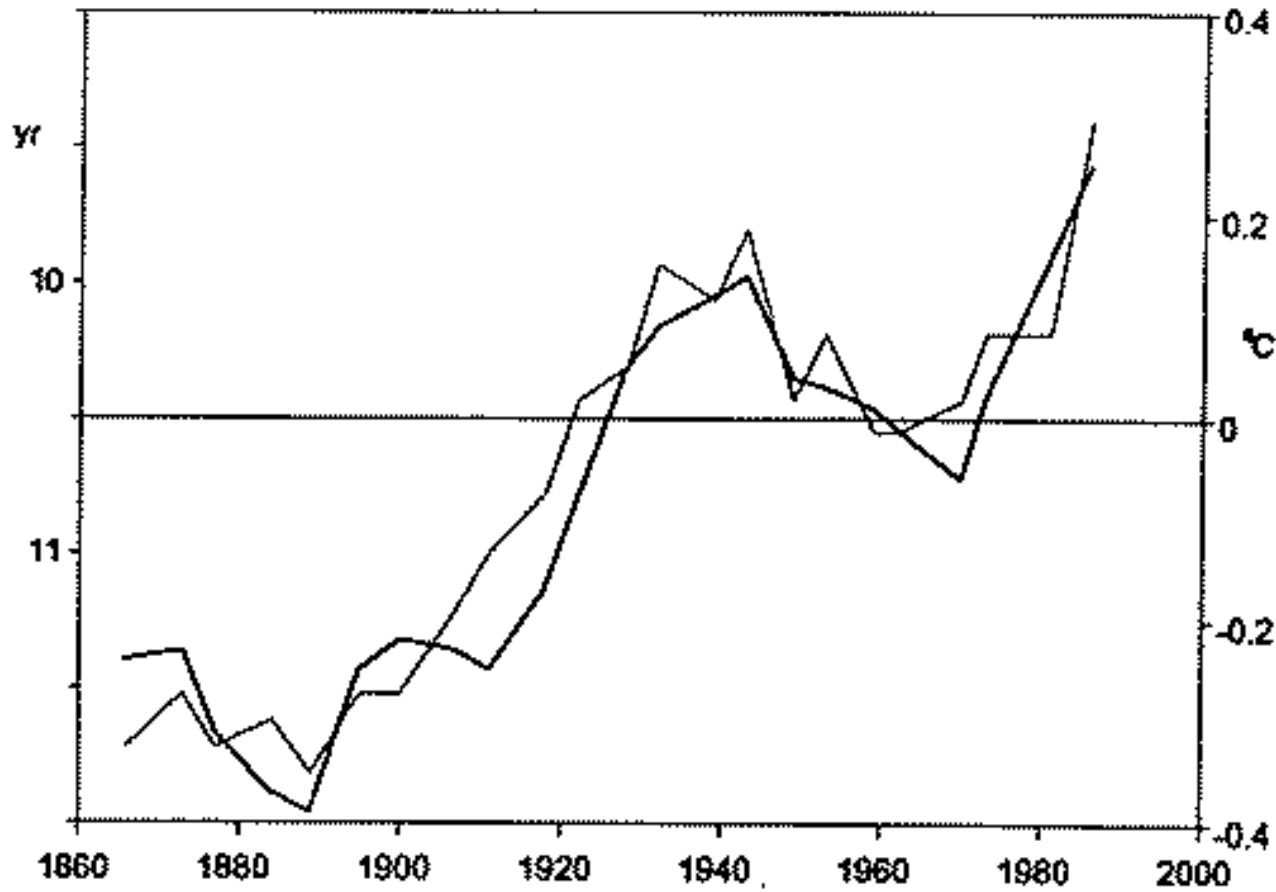


From http://science.nasa.gov/headlines/y2003/17jan_solcon.htm, "The Inconstant Sun"



From http://science.nasa.gov/headlines/y2003/17jan_solcon.htm, "The Inconstant Sun"



From http://science.nasa.gov/headlines/y2003/17jan_solcon.htm, "The Inconstant Sun"

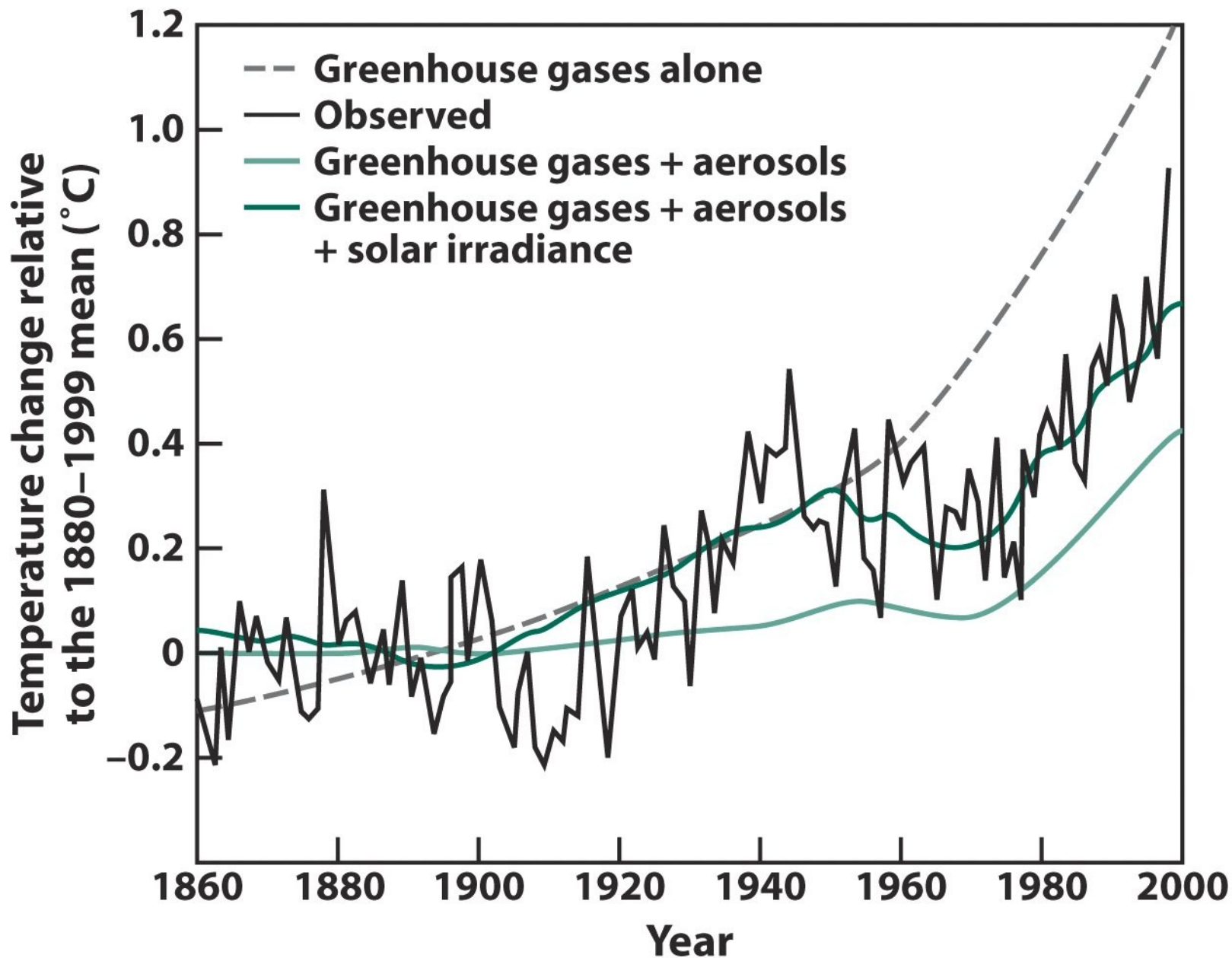
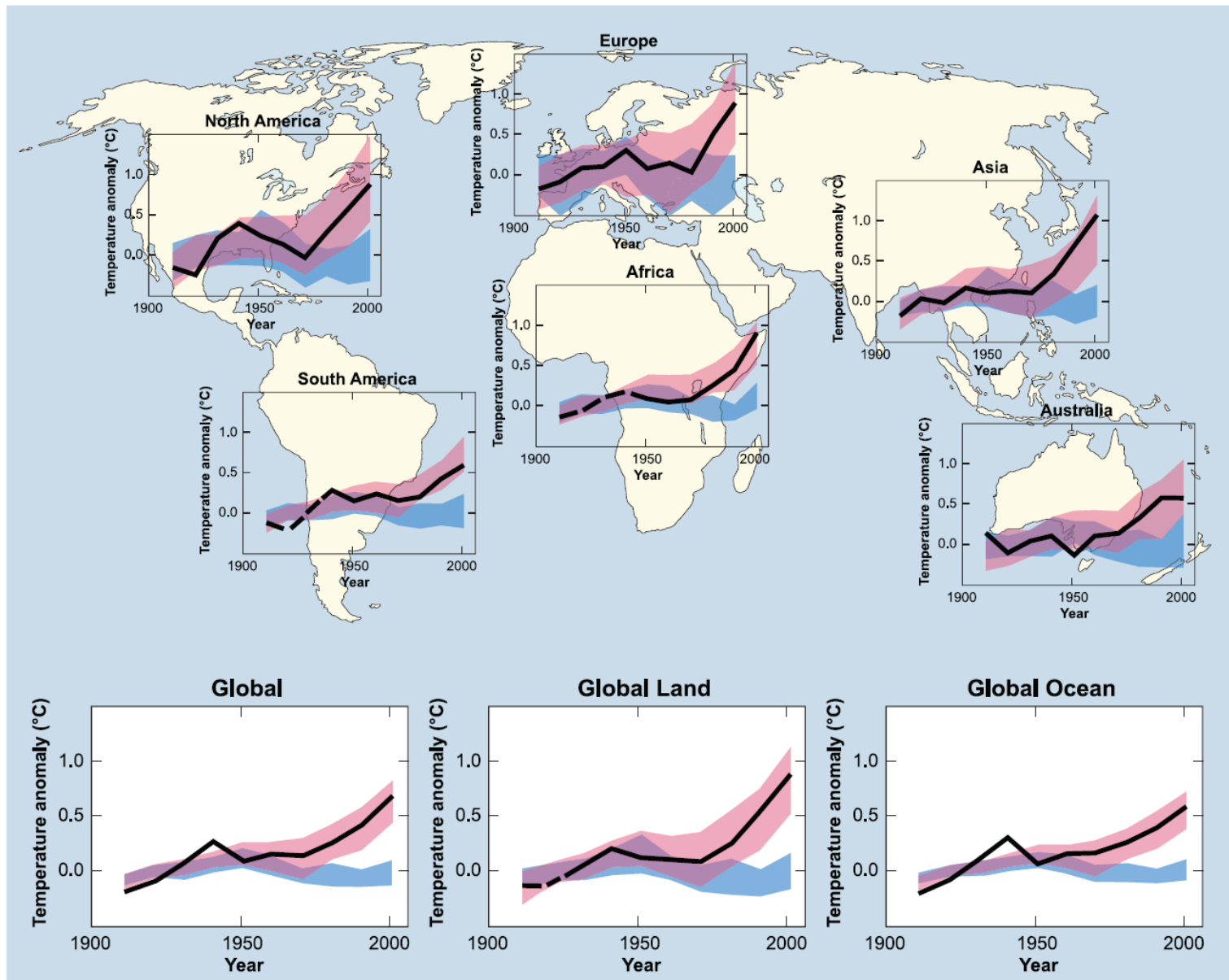


Figure 4-22
Environmental Chemistry, Third Edition
© 2005 W. H. Freeman and Company

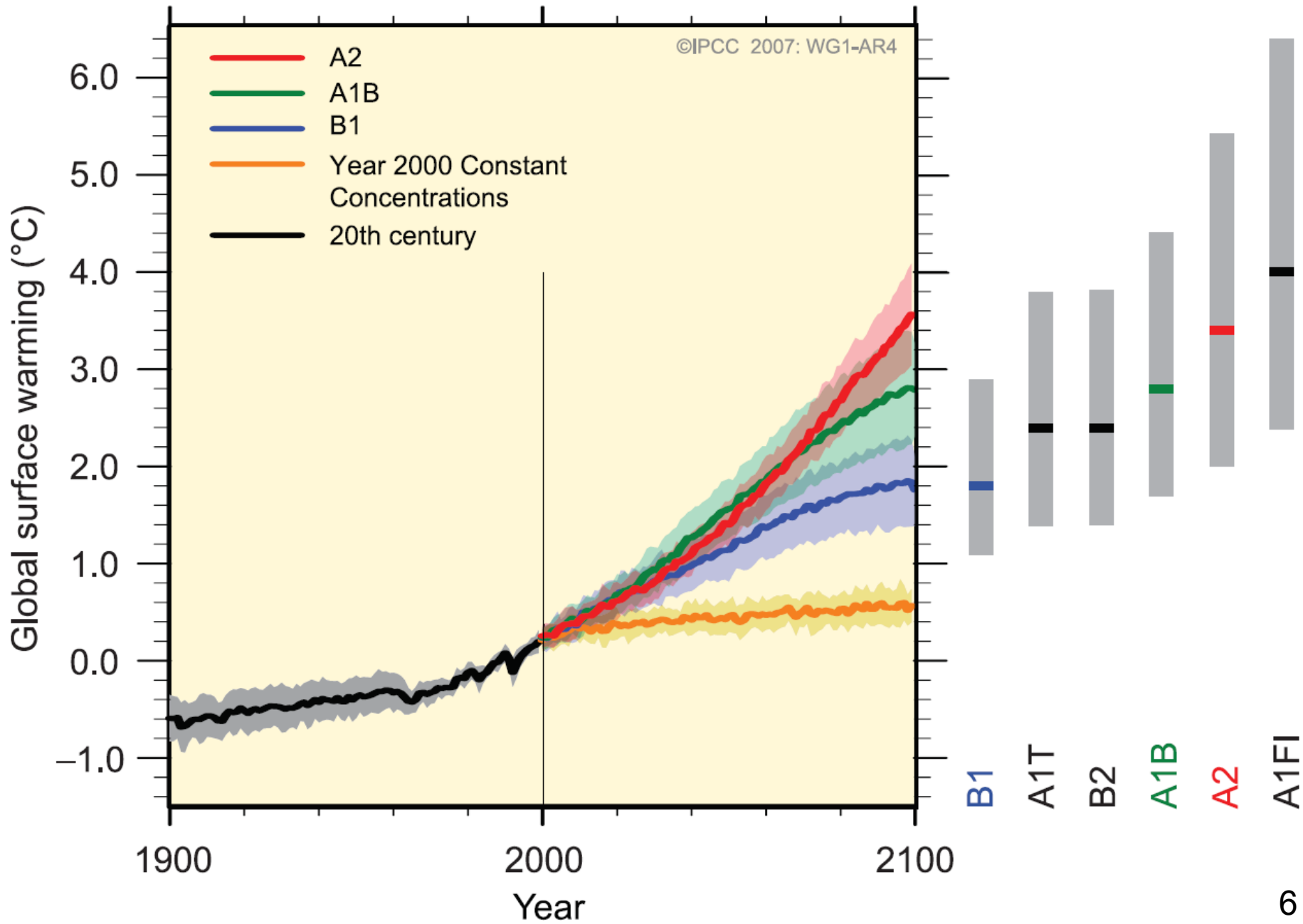
GLOBAL AND CONTINENTAL TEMPERATURE CHANGE



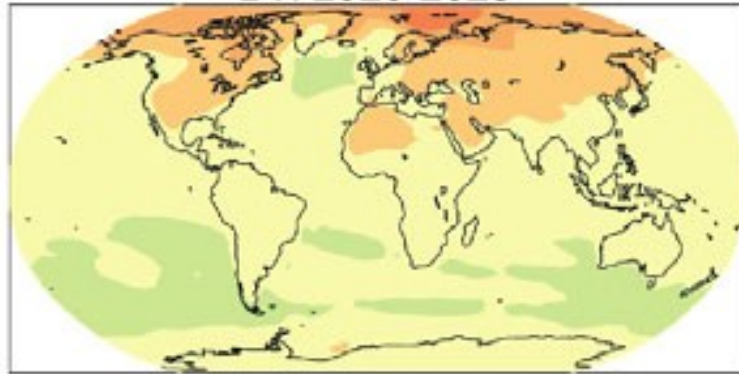
models using only natural forcings
 models using both natural and anthropogenic forcings

observations

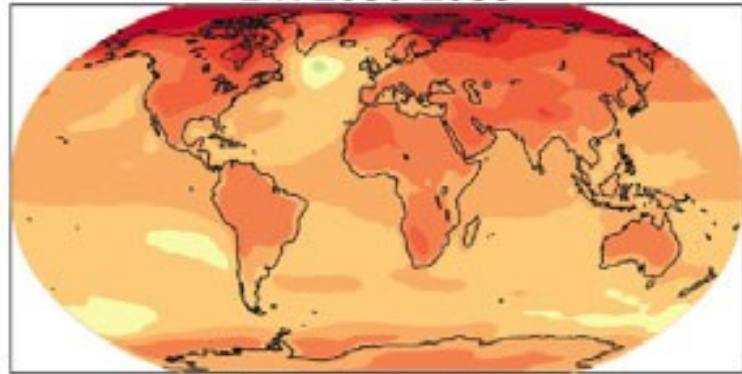
MULTI-MODEL AVERAGES AND ASSESSED RANGES FOR SURFACE WARMING



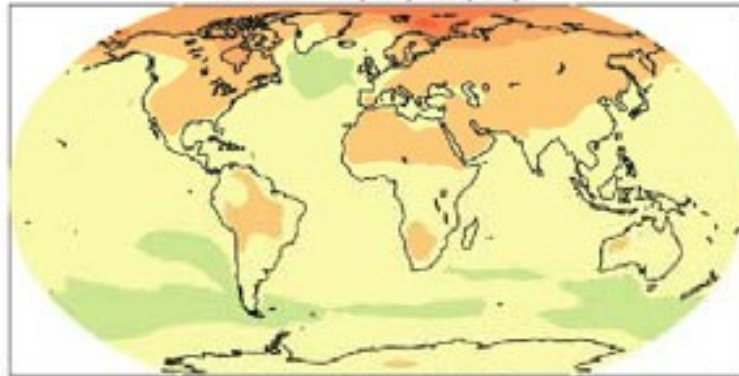
B1: 2020-2029



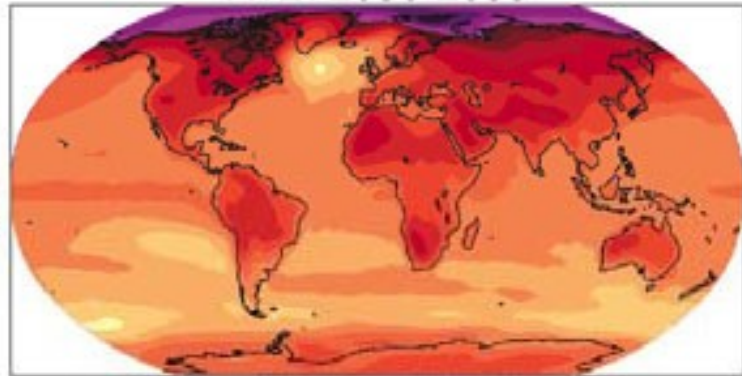
B1: 2090-2099



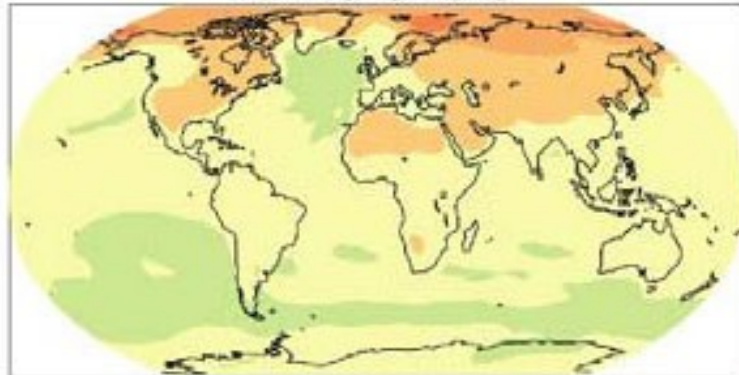
A1B: 2020-2029



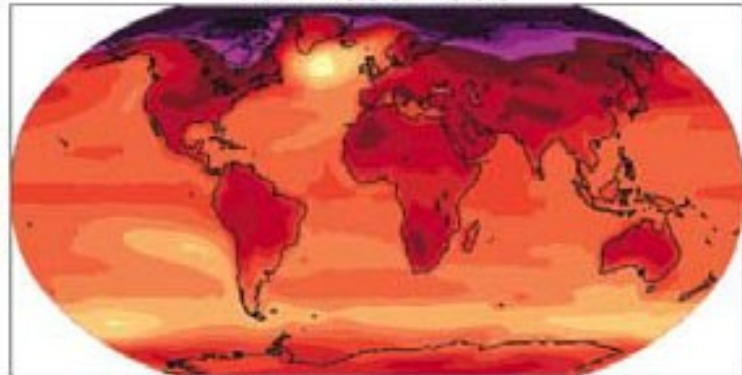
A1B: 2090-2099



A2: 2020-2029



A2: 2090-2099



©IPCC: 2007: WG1-AR4

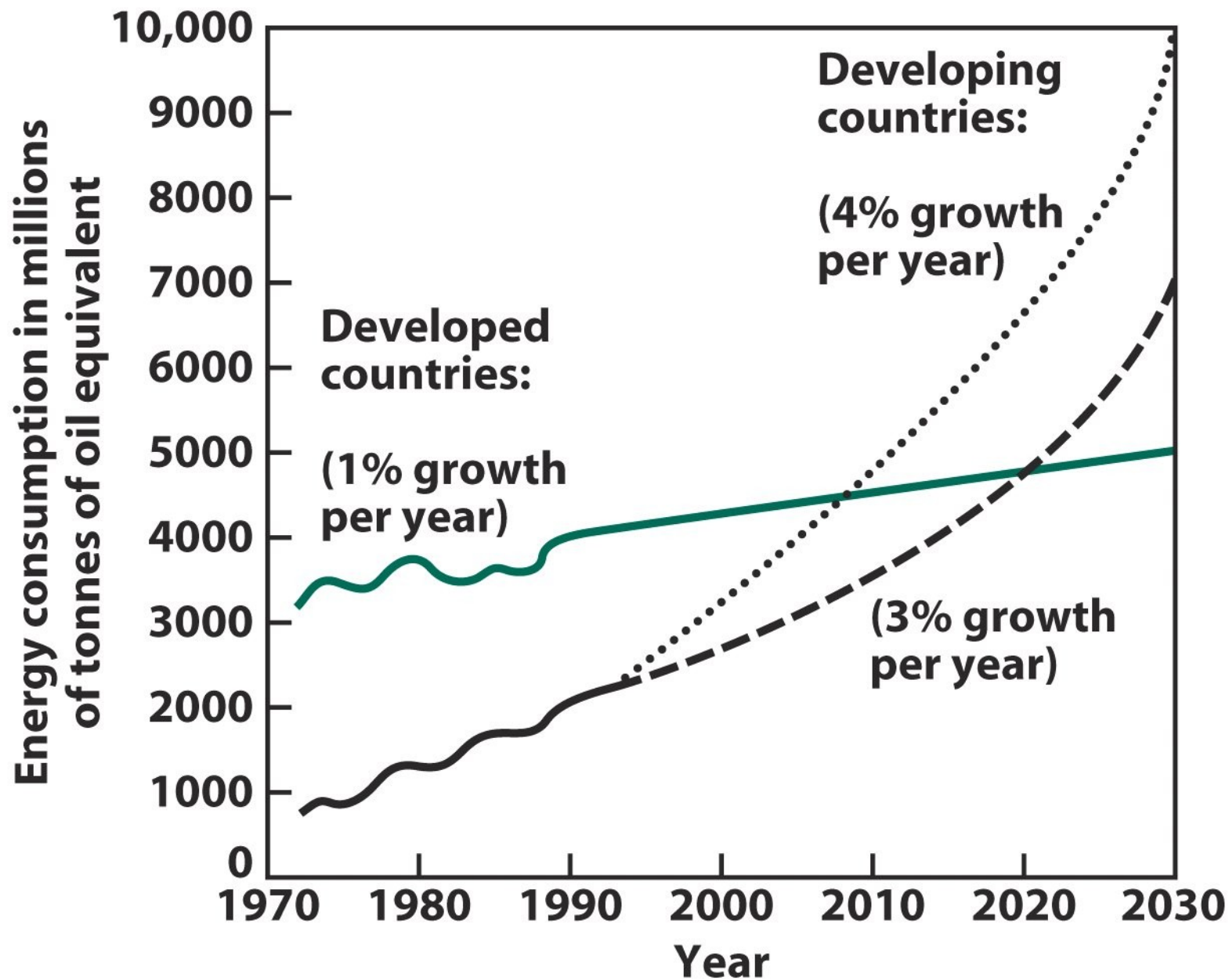


Figure 5-3
Environmental Chemistry, Third Edition
 © 2005 W. H. Freeman and Company