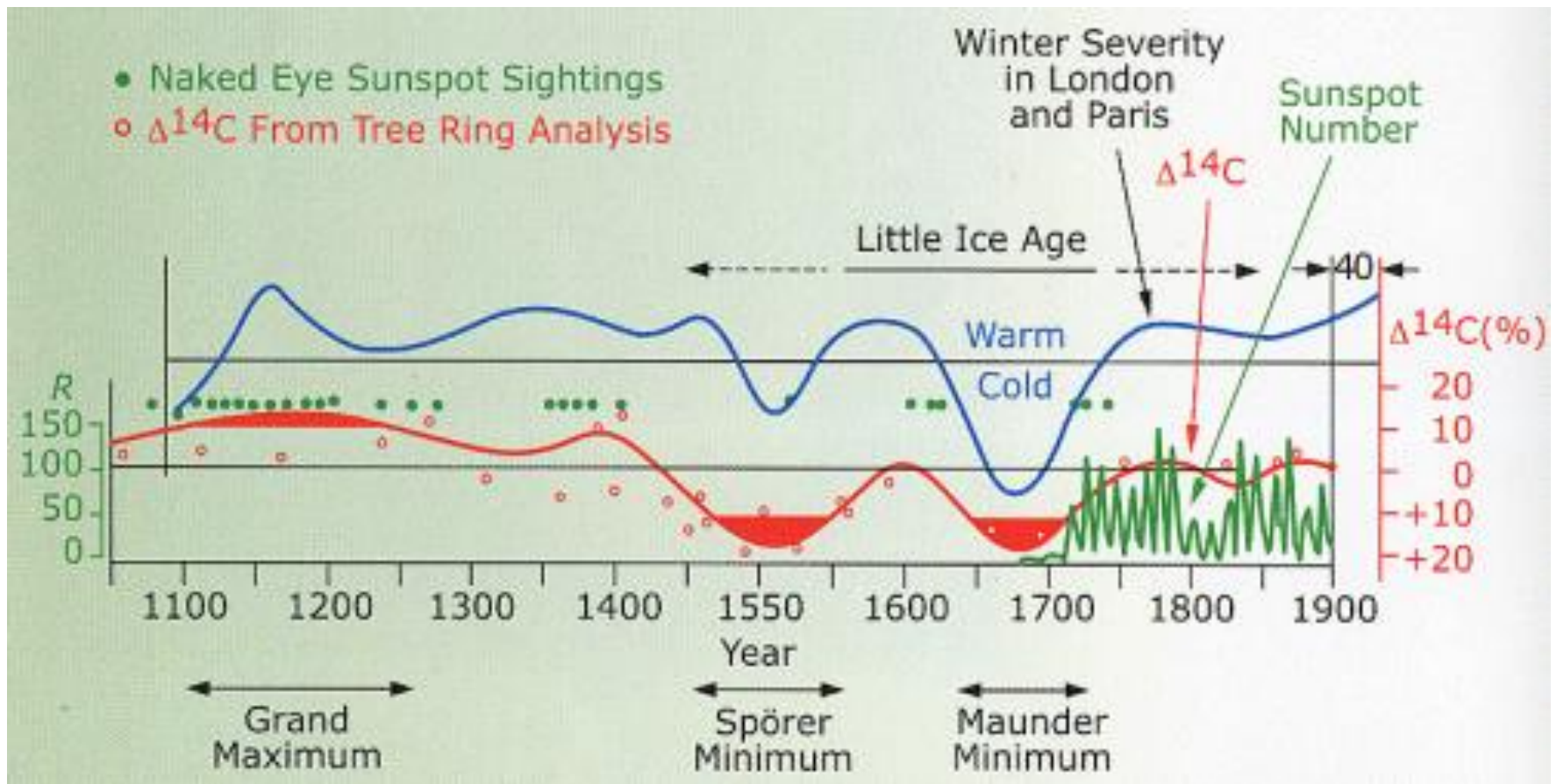
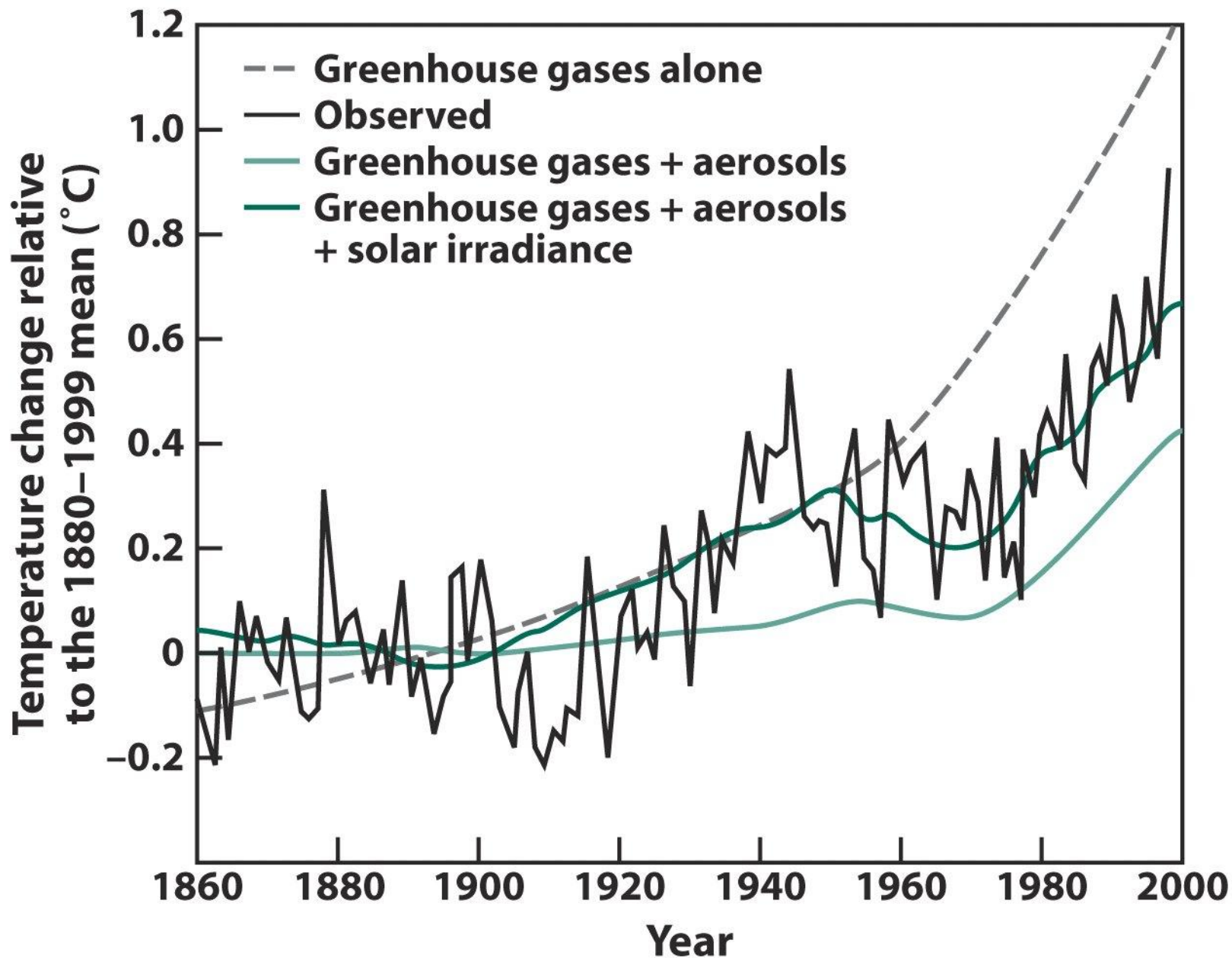


There is a repeating 11 year cycle of sunspot intensity that correlates with increased solar flux

There is also historical evidence of greater variations over short time scales

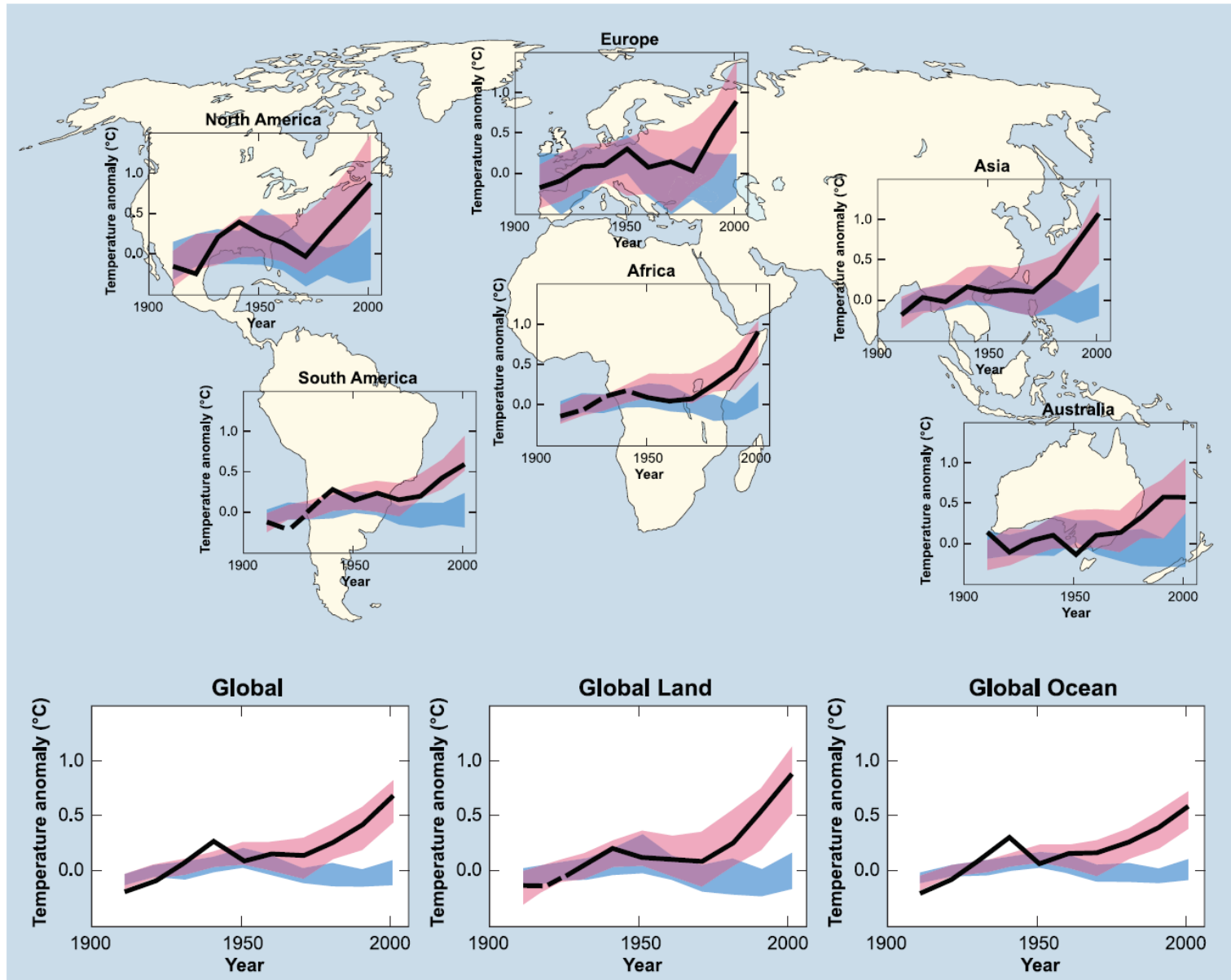


From [http://science.nasa.gov/headlines/y2003/17jan\\_solcon.htm](http://science.nasa.gov/headlines/y2003/17jan_solcon.htm), "The Inconstant Sun"



**Figure 4-22**  
*Environmental Chemistry, Third Edition*  
© 2005 W. H. Freeman and Company

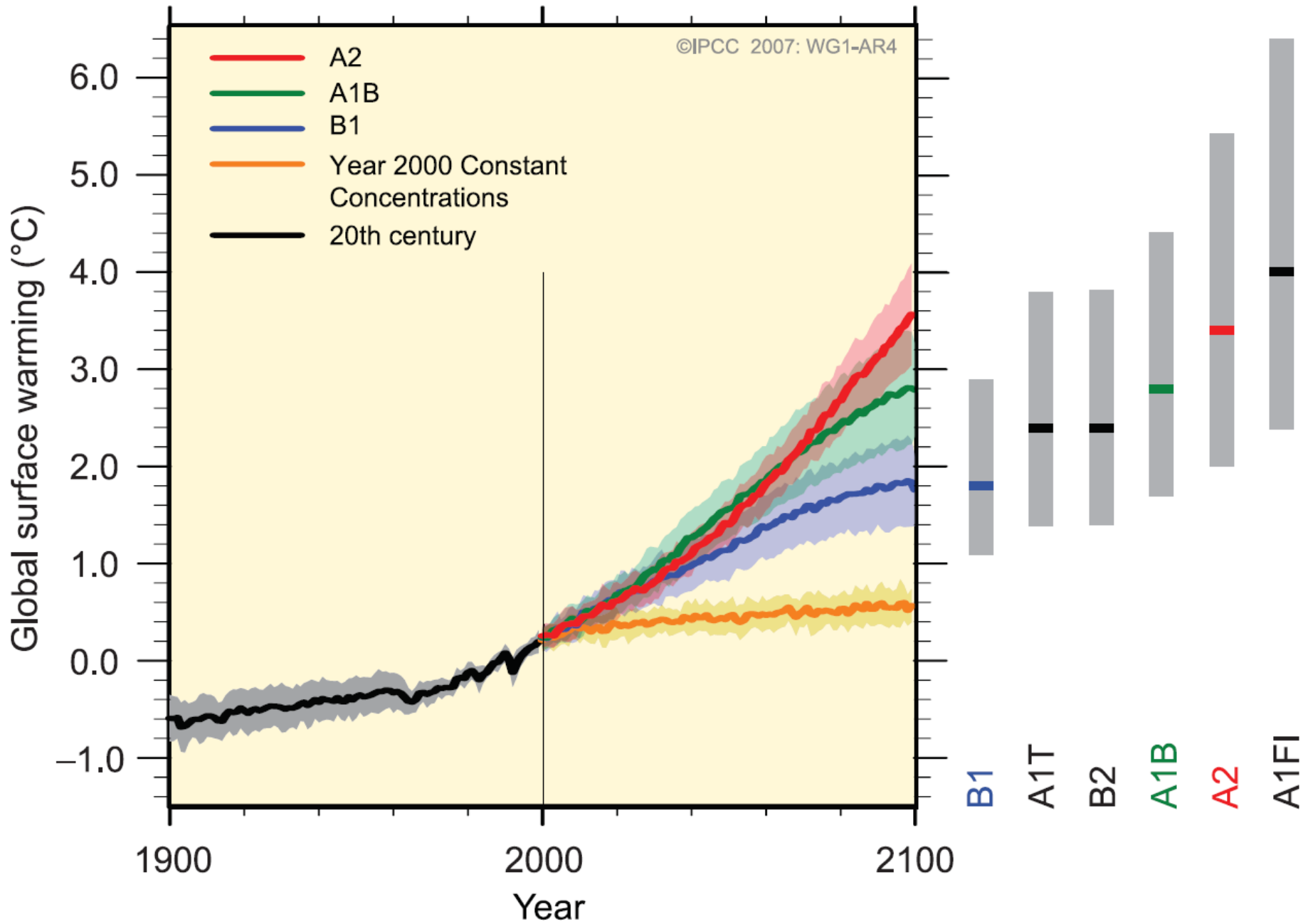
# GLOBAL AND CONTINENTAL TEMPERATURE CHANGE



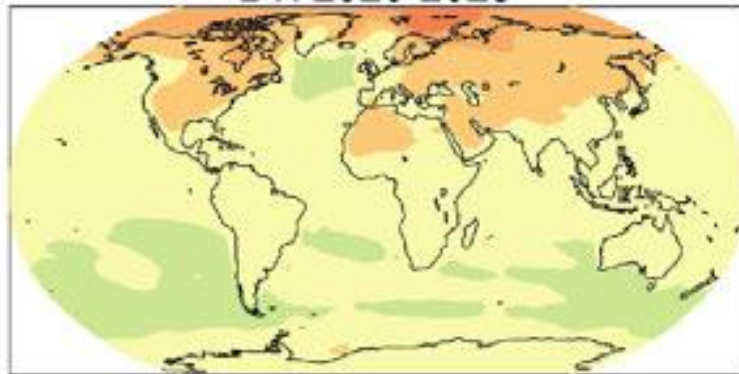
models using only natural forcings  
 models using both natural and anthropogenic forcings

observations

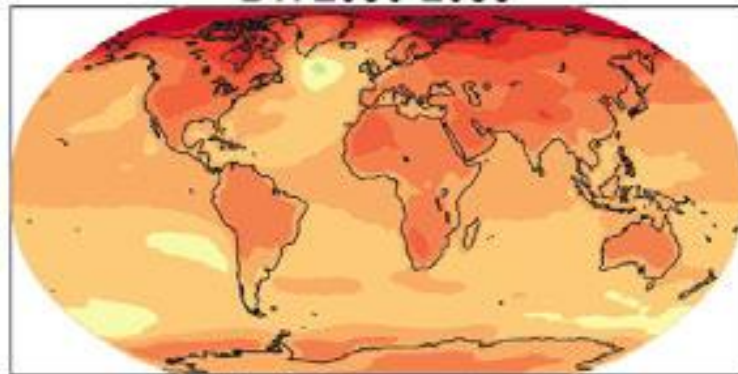
# MULTI-MODEL AVERAGES AND ASSESSED RANGES FOR SURFACE WARMING



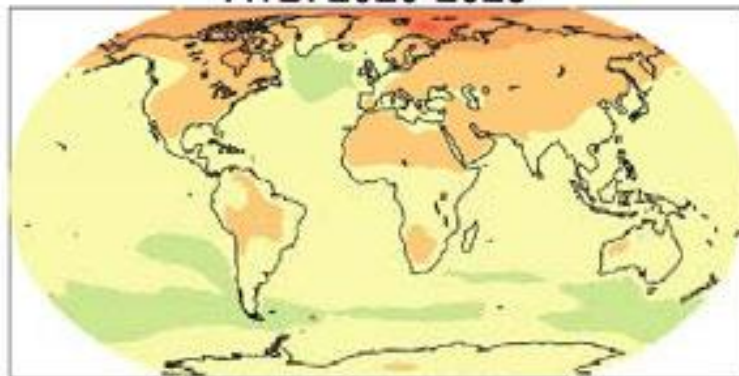
B1: 2020-2029



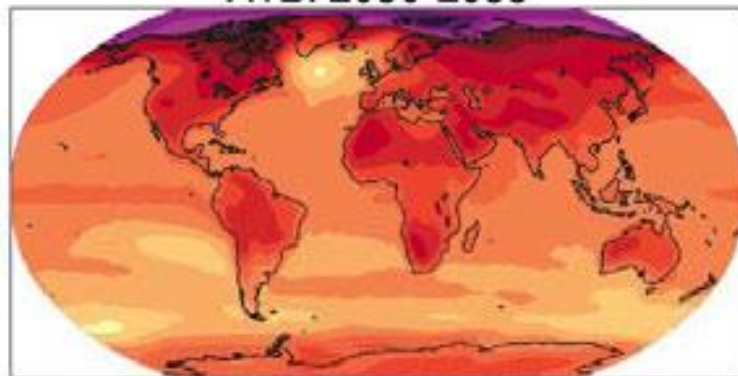
B1: 2090-2099



A1B: 2020-2029



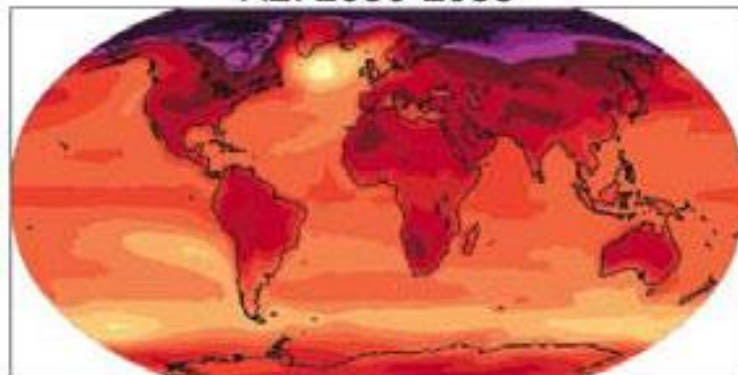
A1B: 2090-2099

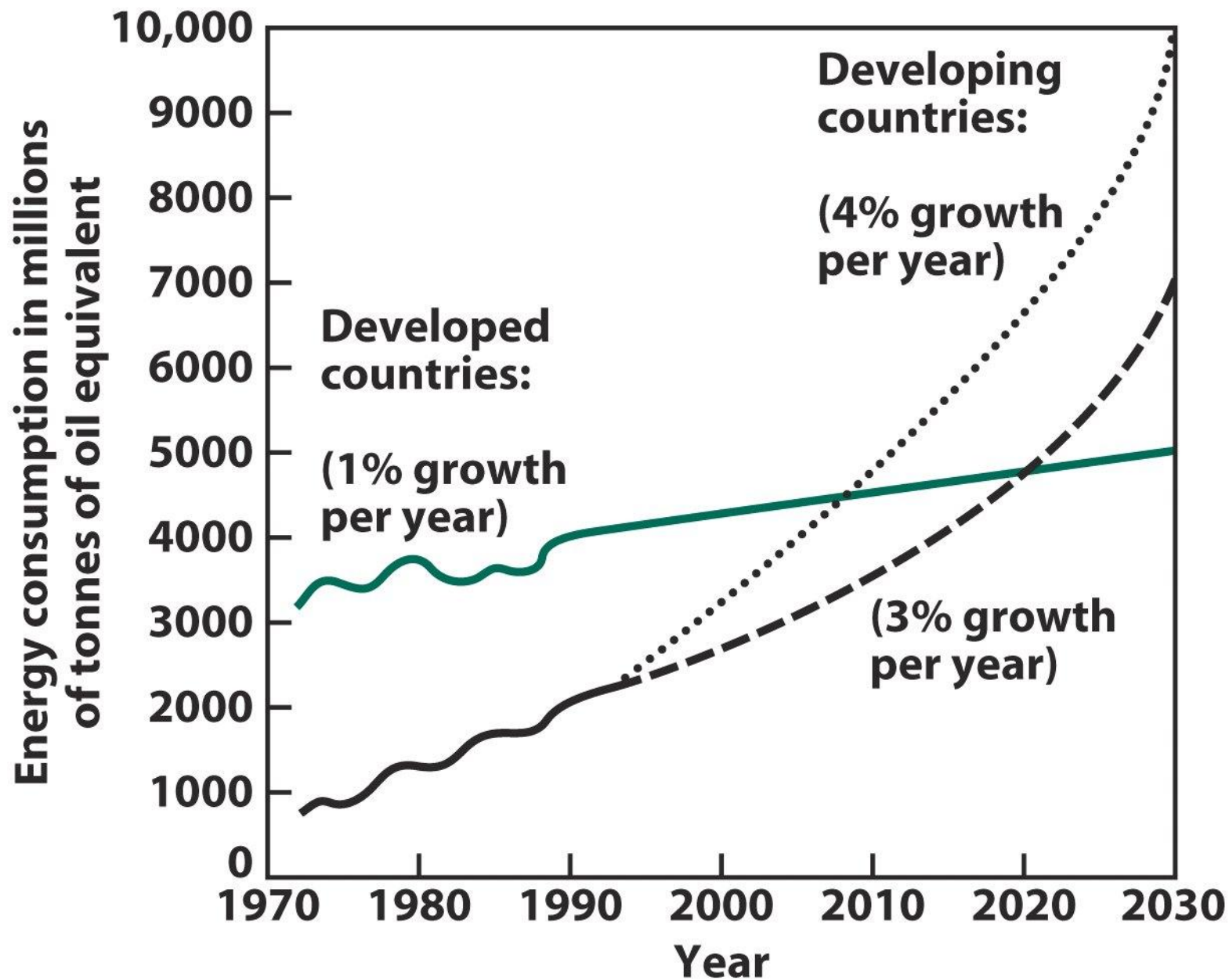


A2: 2020-2029



A2: 2090-2099





**Figure 5-3**  
*Environmental Chemistry, Third Edition*  
 © 2005 W. H. Freeman and Company