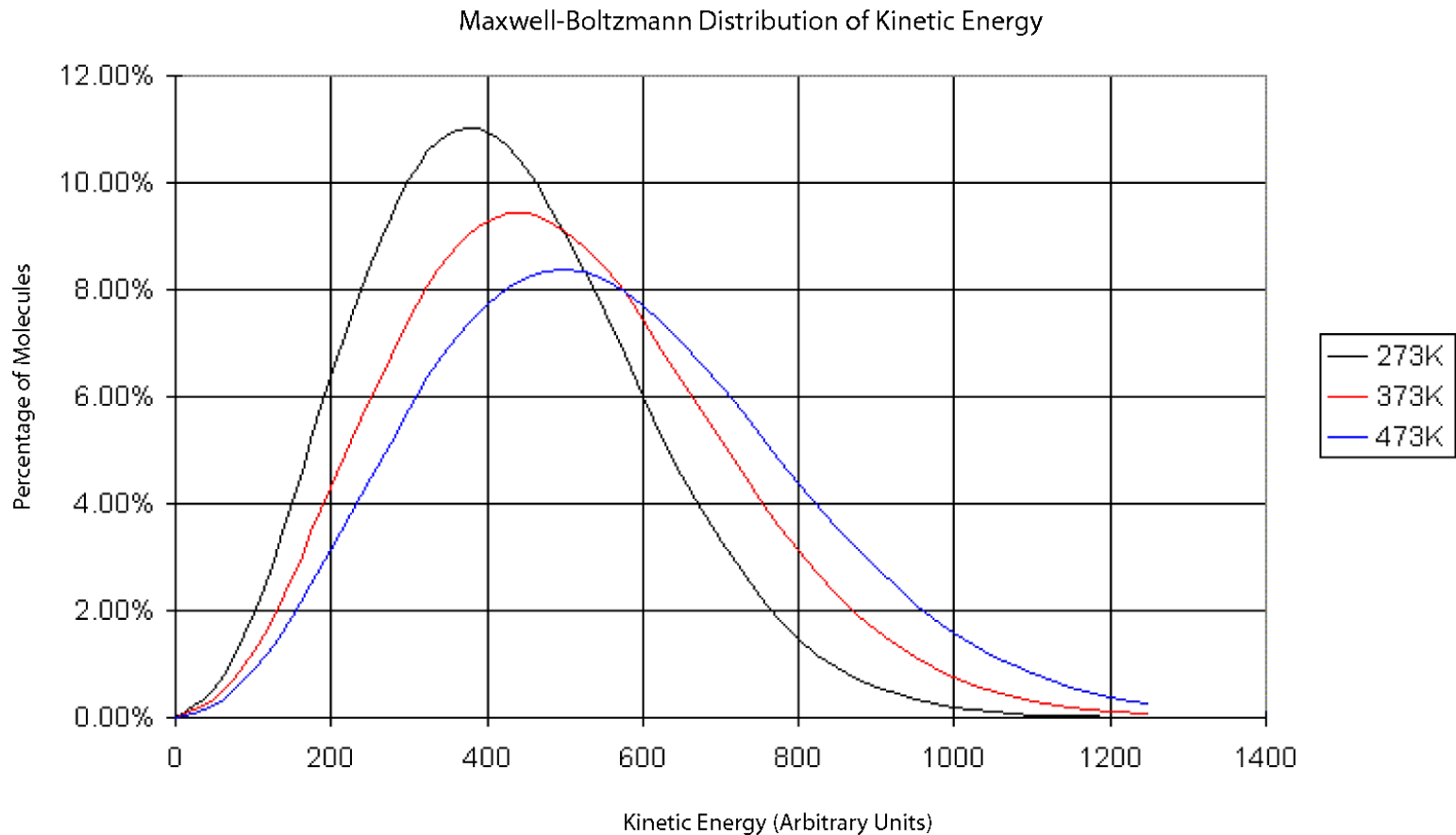
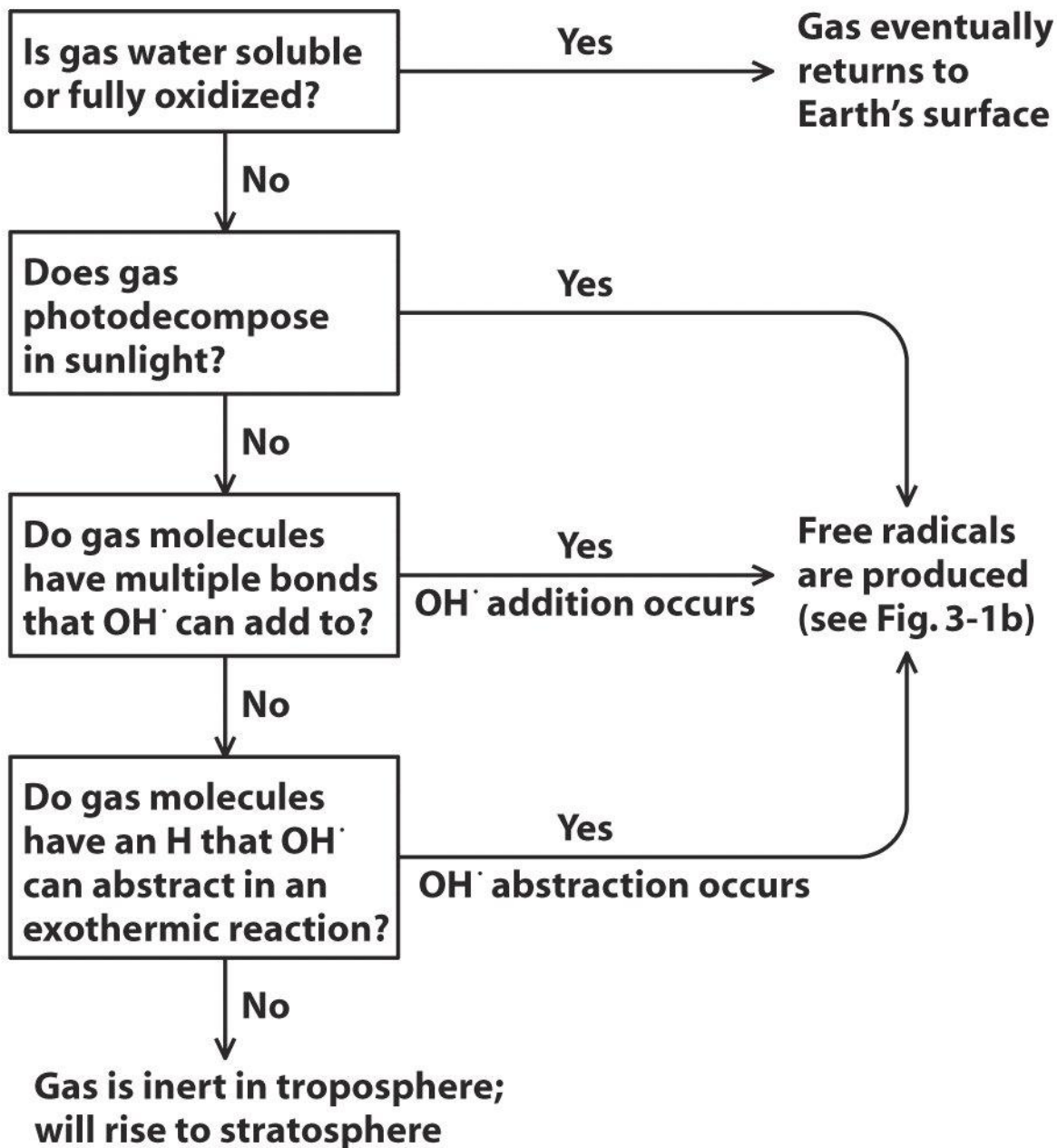


# Gas phase kinetics

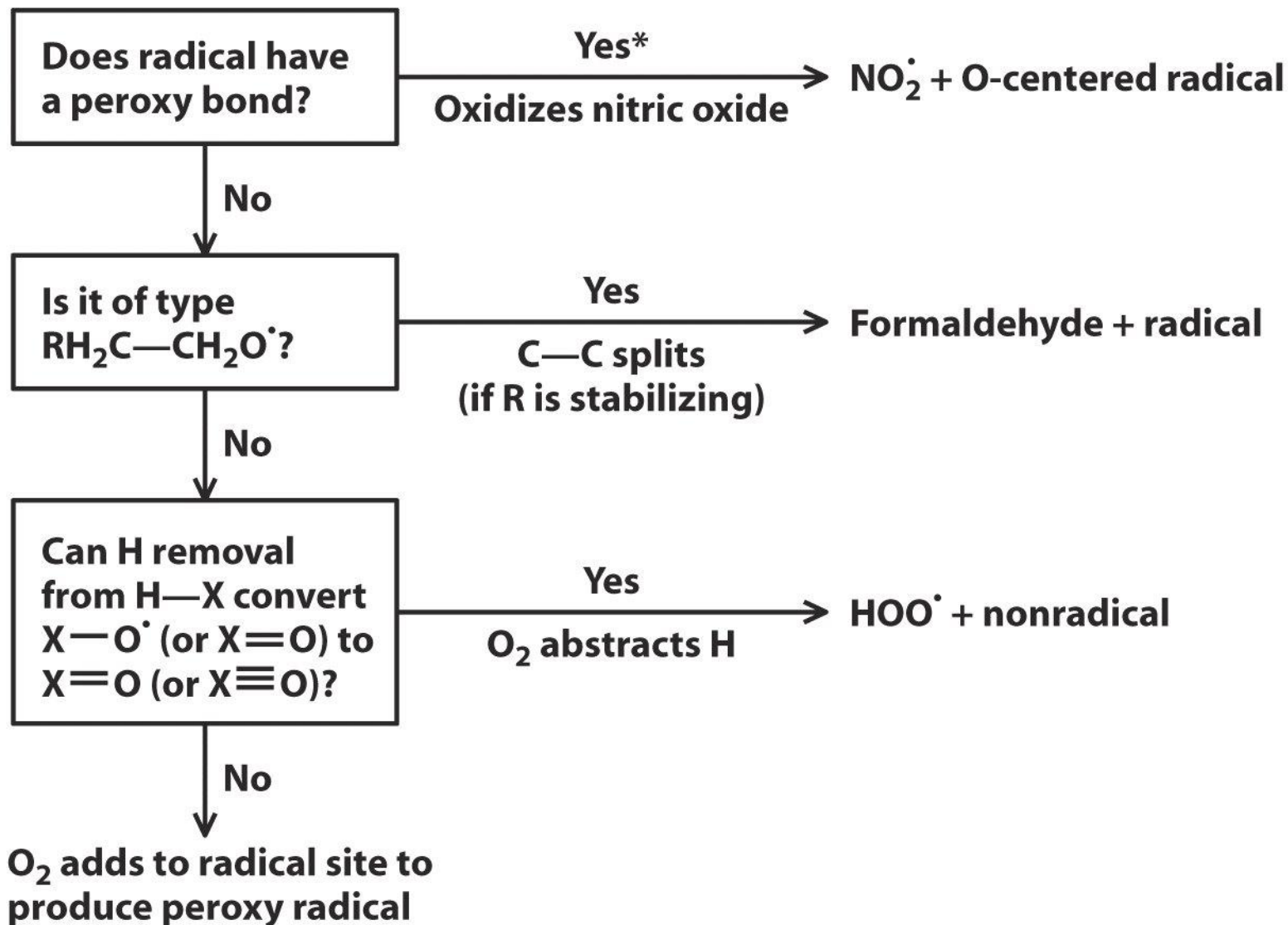
Recall the Maxwell-Boltzmann Distribution of Kinetic Energy:

$$f(E) = N_E/N \propto e^{-E/RT}$$

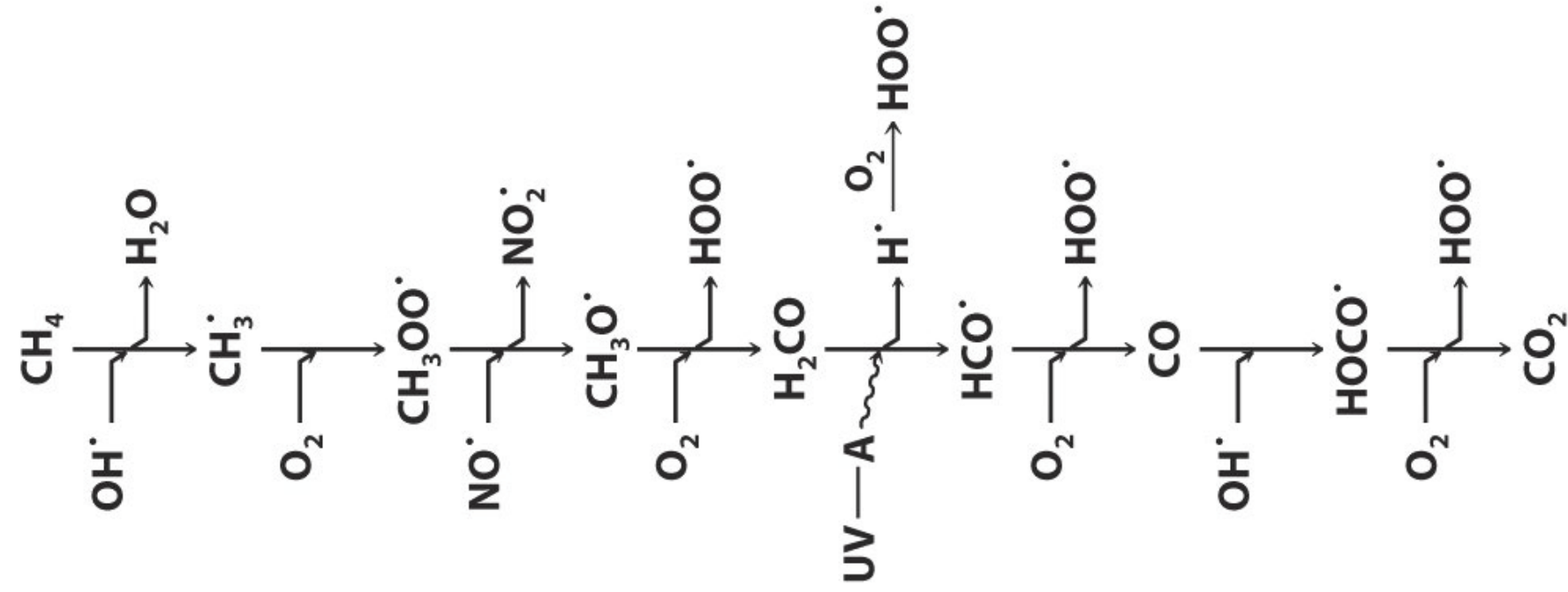




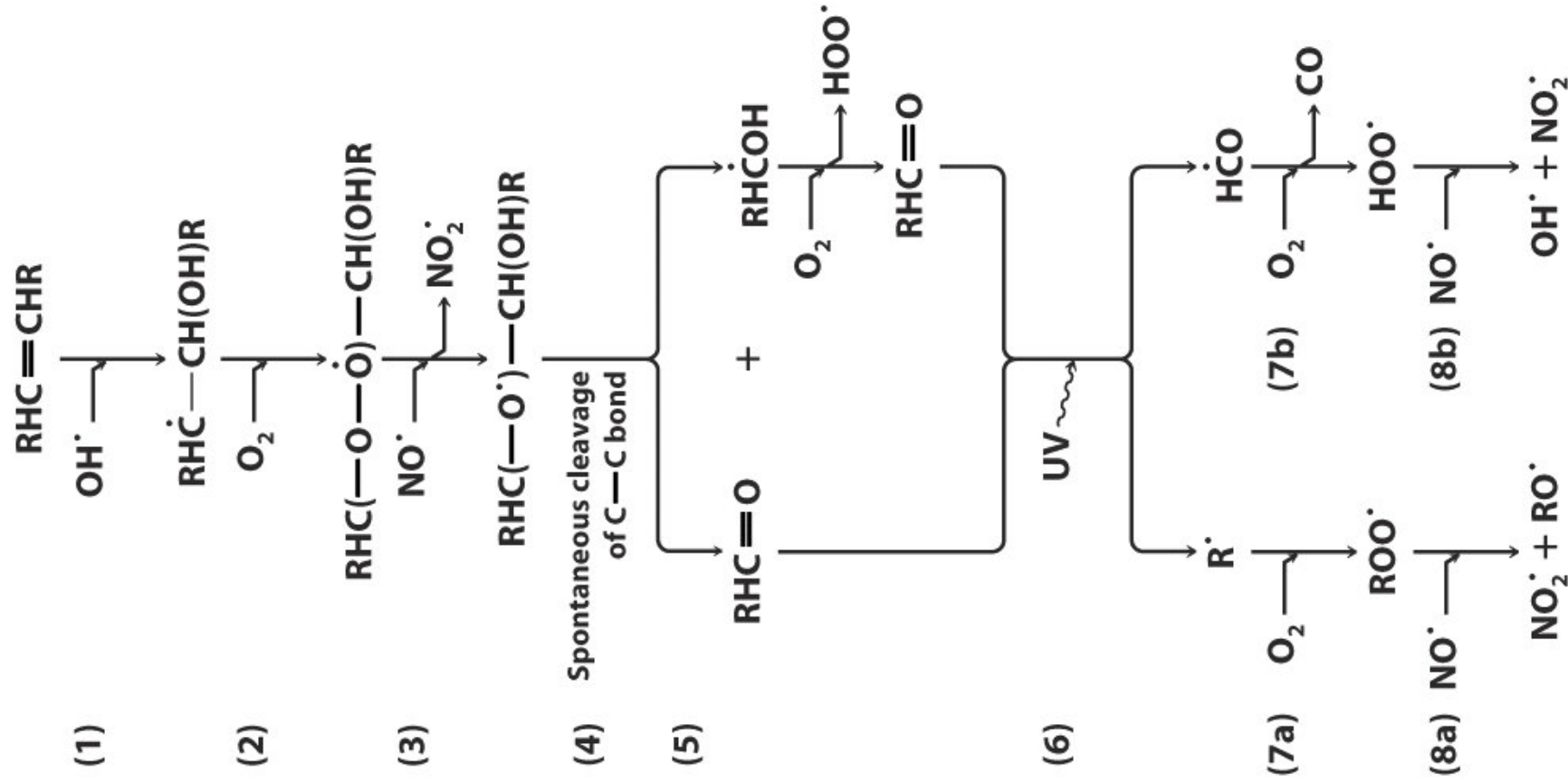
**Figure 3-1a**  
*Environmental Chemistry, Third Edition*  
© 2005 W. H. Freeman and Company



\* Under conditions with significant nitric oxide present and before radical + radical reactions become important.



**Figure 3-2**  
*Environmental Chemistry, Third Edition*  
 © 2005 W.H. Freeman and Company



**Figure 3-4**  
*Environmental Chemistry, Third Edition*  
 © 2005 W.H. Freeman and Company

