

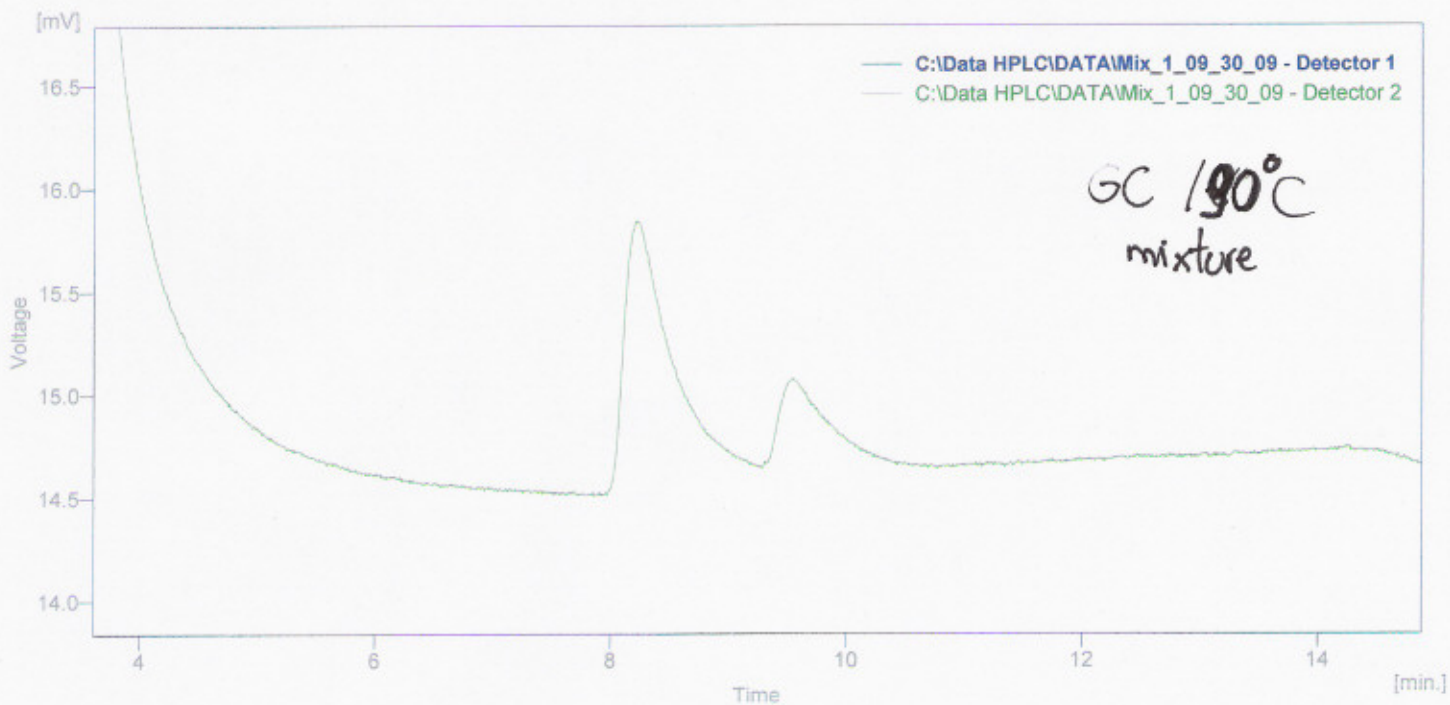
Result Table (Uncal - C:\Data HPLC\DATA\Mix\_1\_09\_30\_09 - Detector 1)

	Reten. Time [min]	Area [mV.s]	Height [mV]	Area [%]	Height [%]	W05 [min]
1	5.800	78.278	7.600	16.4	41.8	0.18
2	5.952	138.512	8.099	29.1	44.5	0.25
3	7.796	220.260	1.693	46.3	9.3	1.69
4	10.032	38.890	0.791	8.2	4.4	1.03
	Total	475.940	18.183	100.0	100.0	

Result Table (Uncal - C:\Data HPLC\DATA\Mix\_1\_09\_30\_09 - Detector 2)

	Reten. Time [min]	Area [mV.s]	Height [mV]	Area [%]	Height [%]	W05 [min]
1	3.444	4060.426	1069.458	39.8	49.8	0.07
2	3.520	6074.591	1069.554	59.5	49.8	0.09
3	5.252	51.783	7.781	0.5	0.4	0.09
4	5.732	19.871	2.750	0.2	0.1	0.10
	Total	10206.670	2149.542	100.0	100.0	

GC Mixture @ 120°C/10min      10°C/min - 150°C/17min  
(17)



Result Table (Uncal - C:\Data HPLC\DATA\Mix\_1\_09\_30\_09 - Detector 1)

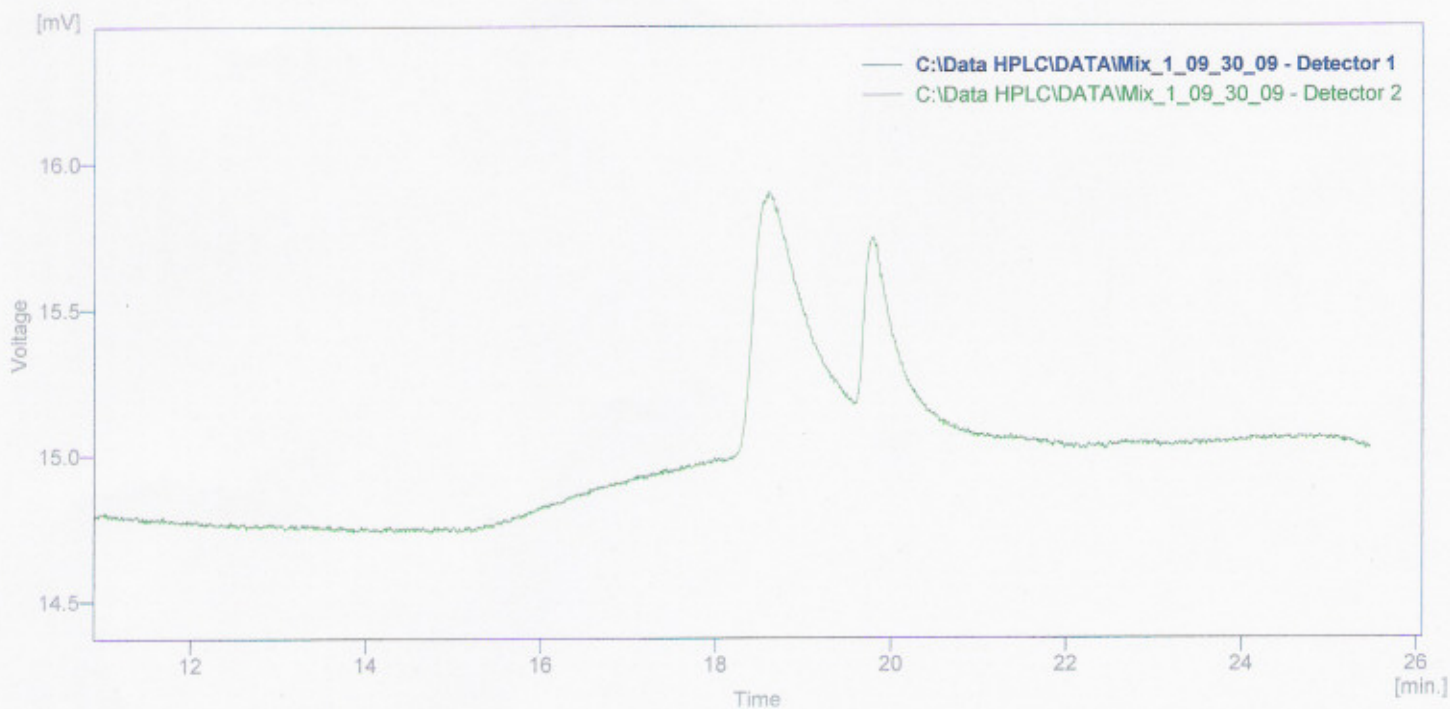
	Reten. Time [min]	Area [mV.s]	Height [mV]	Area [%]	Height [%]	W05 [min]
1	4.156	584.442	9.821	56.4	77.1	0.69
2	7.024	380.493	2.098	36.7	16.5	2.92
3	10.376	72.185	0.819	7.0	6.4	2.24
	Total	1037.121	12.738	100.0	100.0	

Result Table (Uncal - C:\Data HPLC\DATA\Mix\_1\_09\_30\_09 - Detector 2)

	Reten. Time [min]	Area [mV.s]	Height [mV]	Area [%]	Height [%]	W05 [min]
1	2.988	3.007	1.192	3.512e-02	0.1	0.04
2	3.112	1817.603	614.143	21.2	36.4	0.05
3	3.272	6707.365	1069.419	78.3	63.4	0.10
4	8.212	29.951	1.262	0.3	0.1	0.40
5	9.544	6.312	0.347	0.1	2.055e-02	0.35
	Total	8564.239	1886.363	100.0	100.0	

90°C/10min

10°C/min - 150°C for 14 minutes



Result Table (Uncal - C:\Data HPLC\DATA\Mix\_1\_09\_30\_09 - Detector 1)

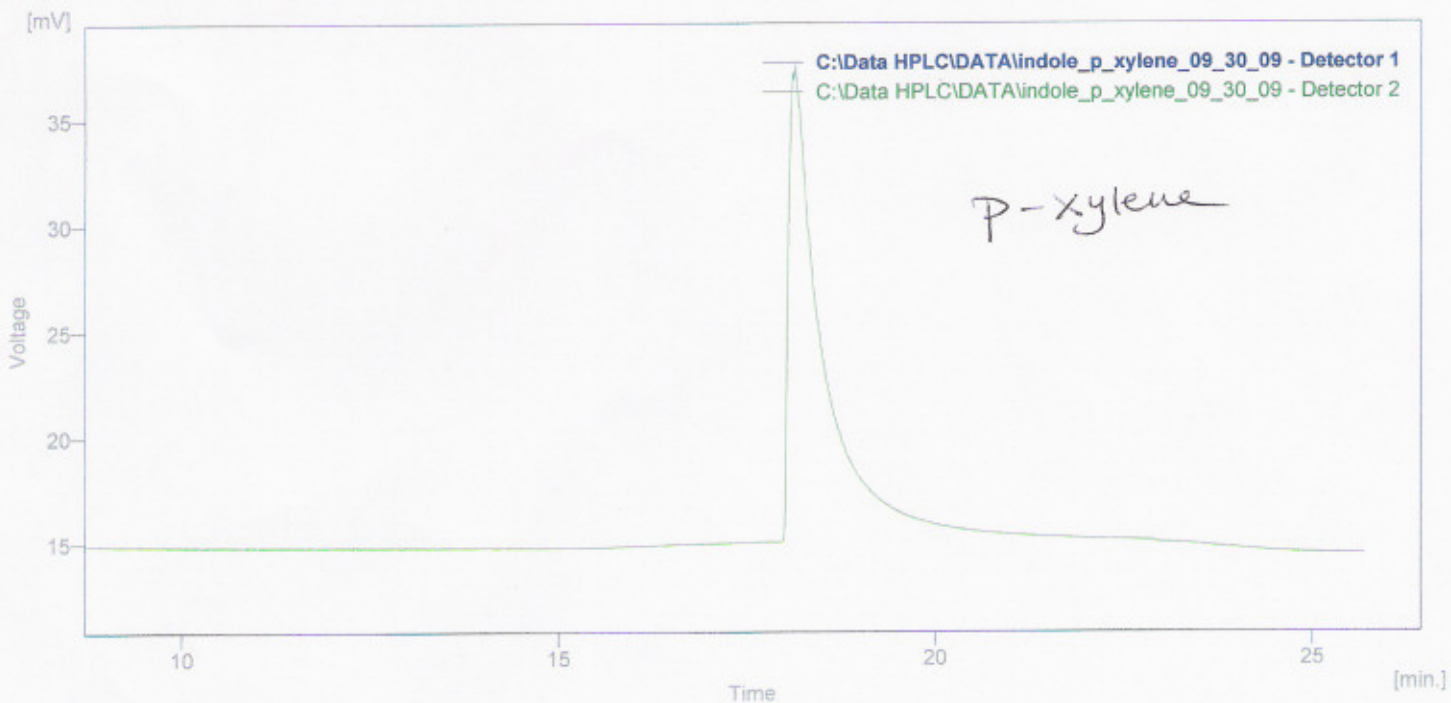
	Reten. Time [min]	Area [mV.s]	Height [mV]	Area [%]	Height [%]	W05 [min]
1	6.480	220.998	7.430	7.5	25.7	0.54
2	6.860	257.489	7.524	8.7	26.0	0.56
3	8.712	460.052	4.694	15.5	16.2	1.74
4	12.236	1205.962	5.369	40.7	18.6	4.27
5	14.904	819.040	3.899	27.6	13.5	4.70
	Total	2963.540	28.916	100.0	100.0	

Result Table (Uncal - C:\Data HPLC\DATA\Mix\_1\_09\_30\_09 - Detector 2)

	Reten. Time [min]	Area [mV.s]	Height [mV]	Area [%]	Height [%]	W05 [min]
1	3.556	2.288	0.489	2.614e-02	0.1	0.06
2	4.124	8716.955	936.354	99.6	99.8	0.12
3	18.600	25.570	0.810	0.3	0.1	0.58
4	19.792	10.247	0.561	0.1	0.1	0.29
	Total	8755.060	938.213	100.0	100.0	

60°C/15 min    10°C/min ~~to 150°C~~ to 150°C for 11 minutes.





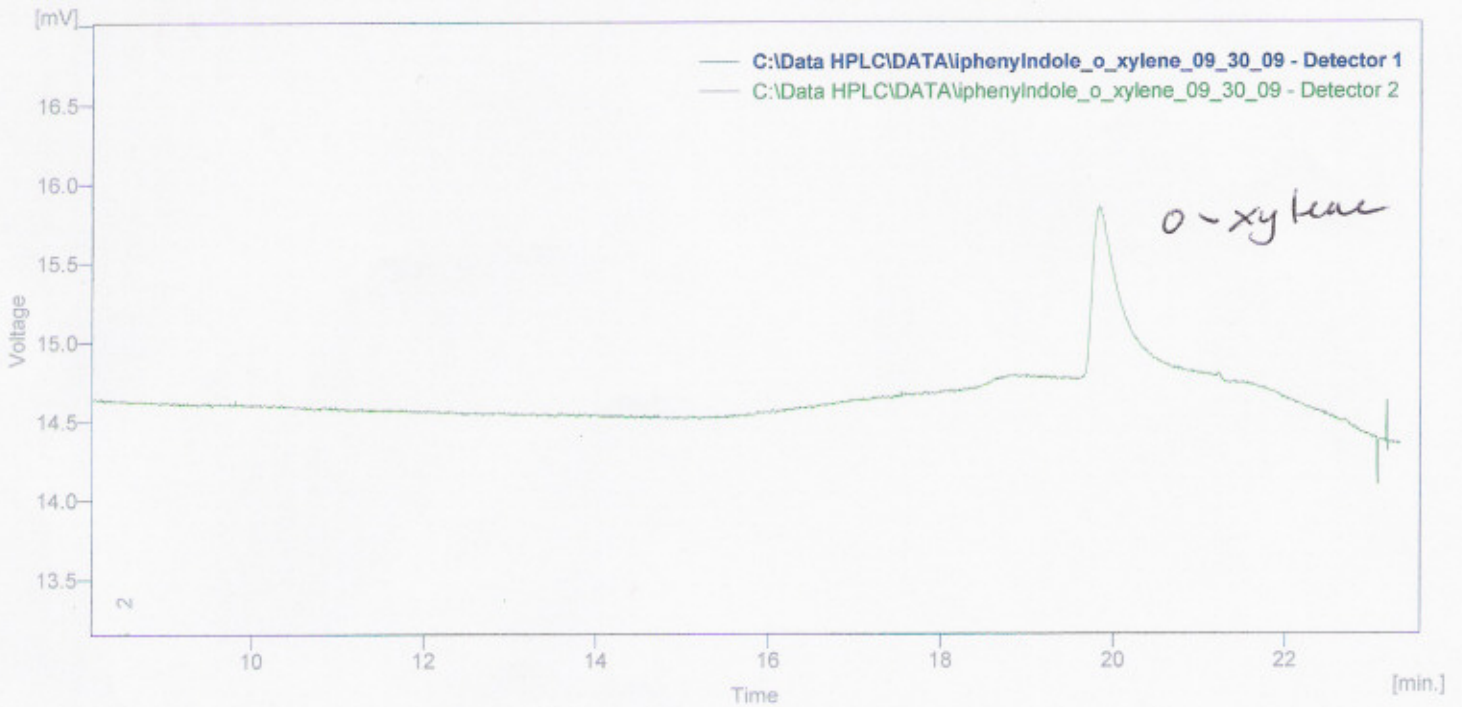
Result Table (Uncal - C:\Data HPLC\DATA\indole\_p\_xylene\_09\_30\_09 - Detector 1)

	Reten. Time [min]	Area [mV.s]	Height [mV]	Area [%]	Height [%]	W05 [min]
1	1.068	39.685	0.509	0.9	2.3	1.36
2	6.476	469.361	8.403	10.3	38.3	0.86
3	10.484	1283.941	5.813	28.2	26.5	3.99
4	15.084	2761.996	7.197	60.6	32.8	7.10
	Total	4554.983	21.921	100.0	100.0	

Result Table (Uncal - C:\Data HPLC\DATA\indole\_p\_xylene\_09\_30\_09 - Detector 2)

	Reten. Time [min]	Area [mV.s]	Height [mV]	Area [%]	Height [%]	W05 [min]
1	3.476	0.316	0.159	5.803e-03	2.108e-02	0.04
2	3.552	13.299	3.634	0.2	0.5	0.06
3	3.924	4745.506	729.882	87.1	96.5	0.16
4	18.132	688.514	22.507	12.6	3.0	0.38
	Total	5447.636	756.182	100.0	100.0	

60° / 15 min 10 °C / min → 150 °C / 11 min



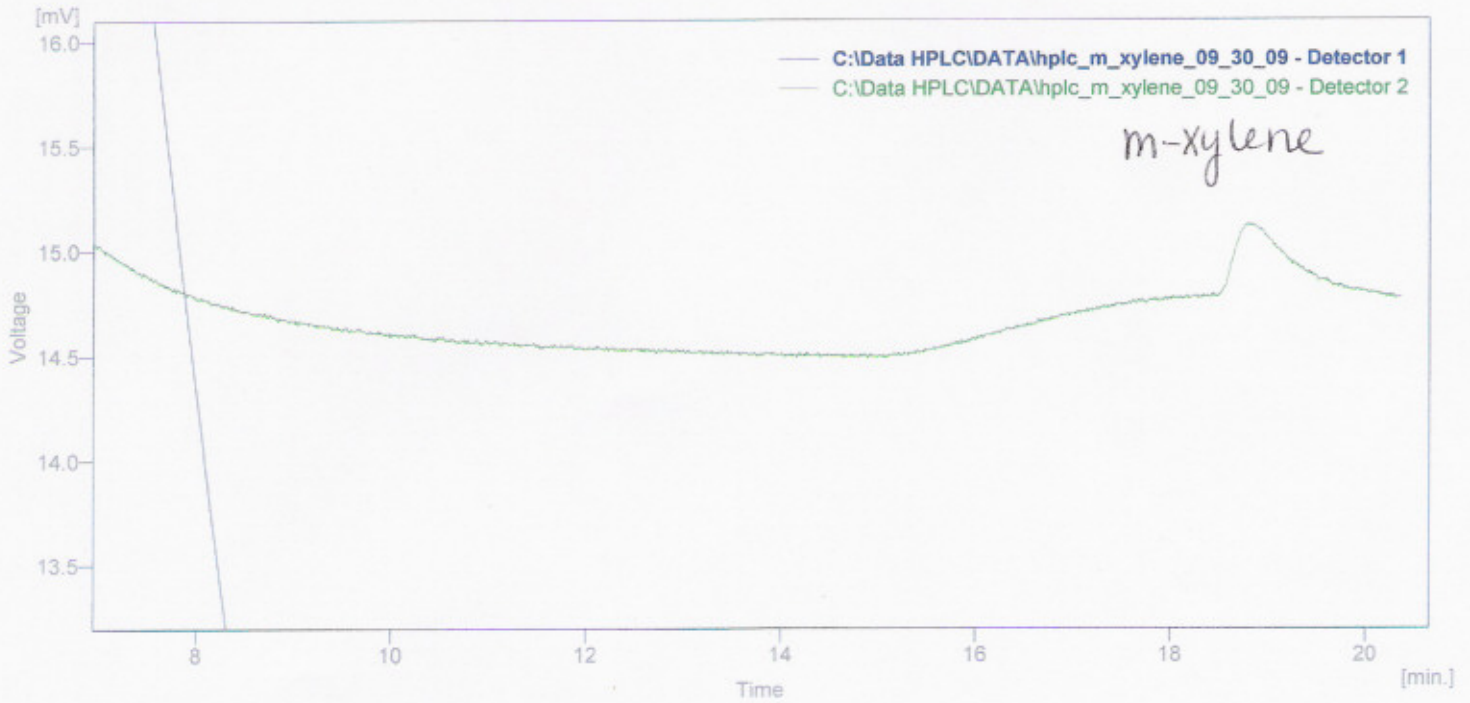
Result Table (Uncal - C:\Data HPLC\DATA\iphenylndole\_o\_xylene\_09\_30\_09 - Detector 1)

	Reten. Time [min]	Area [mV.s]	Height [mV]	Area [%]	Height [%]	W05 [min]
1	6.488	2237.340	18.100	32.9	45.1	1.06
2	8.528	1199.516	12.571	17.6	31.3	2.07
3	12.028	3367.014	9.471	49.5	23.6	5.83
	Total	6803.871	40.142	100.0	100.0	

Result Table (Uncal - C:\Data HPLC\DATA\iphenylndole\_o\_xylene\_09\_30\_09 - Detector 2)

	Reten. Time [min]	Area [mV.s]	Height [mV]	Area [%]	Height [%]	W05 [min]
1	3.608	1.572	0.382	2.446e-02	4.895e-02	0.06
2	4.188	6404.113	778.959	99.7	99.8	0.12
3	19.832	19.710	1.048	0.3	0.1	0.30
	Total	6425.394	780.388	100.0	100.0	

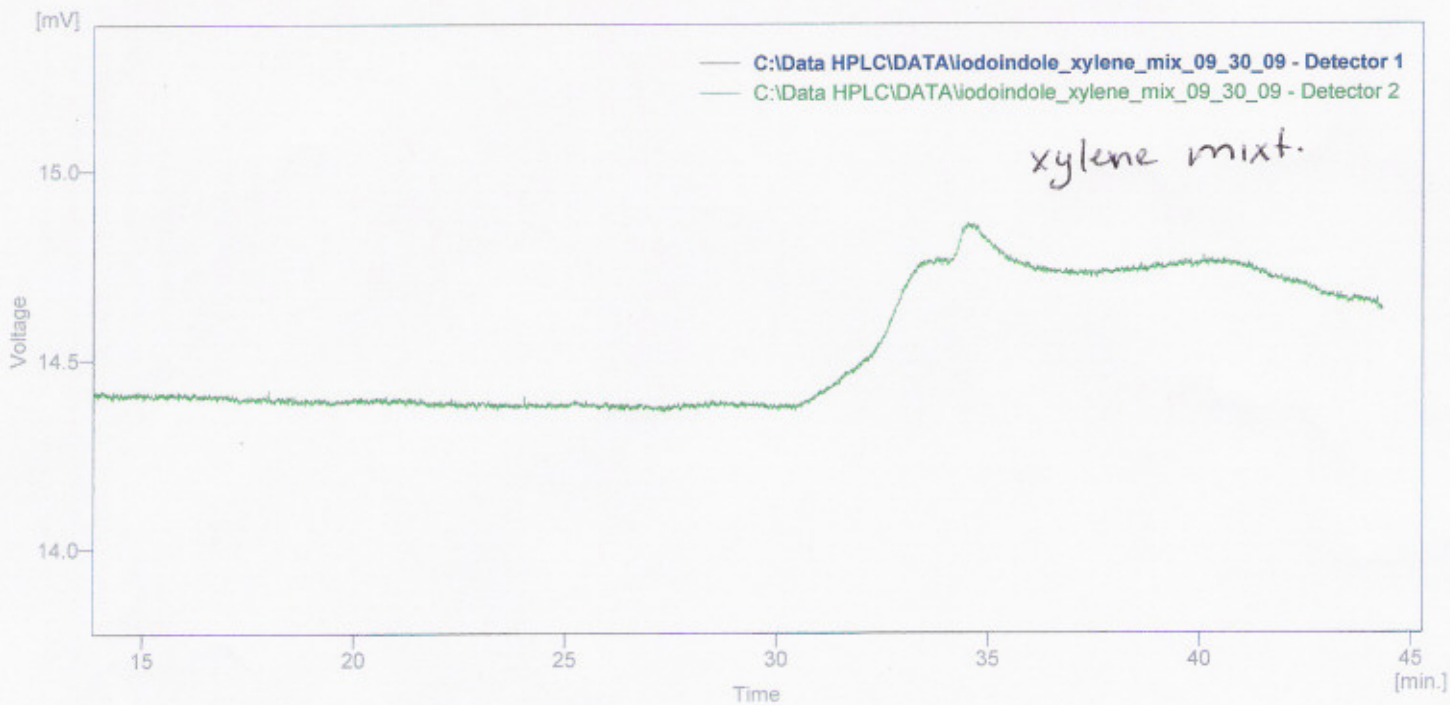
60% 15 min      10°C/min → 150°C/11 min



Result Table (Uncal - C:\Data HPLC\DATA\hplc\_m\_xylene\_09\_30\_09 - Detector 2)

	Reten. Time [min]	Area [mV.s]	Height [mV]	Area [%]	Height [%]	W05 [min]
1	3.860	6416.952	1069.440	65.6	72.1	0.08
2	4.292	3363.601	414.313	34.4	27.9	0.10
3	18.788	4.035	0.218	4.124e-02	1.467e-02	0.39
	Total	9784.588	1483.971	100.0	100.0	

60°/15 min → 10°/min → 150°/11 min



Result Table (Uncal - C:\Data HPLC\DATA\iodoindole\_xylene\_mix\_09\_30\_09 - Detector 1)

	Reten. Time [min]	Area [mV.s]	Height [mV]	Area [%]	Height [%]	W05 [min]
1	6.872	376.770	11.584	2.3	14.2	0.72
2	7.288	403.837	16.580	2.4	20.4	0.47
3	8.820	15755.280	53.180	95.3	65.4	4.22
	Total	16535.888	81.343	100.0	100.0	

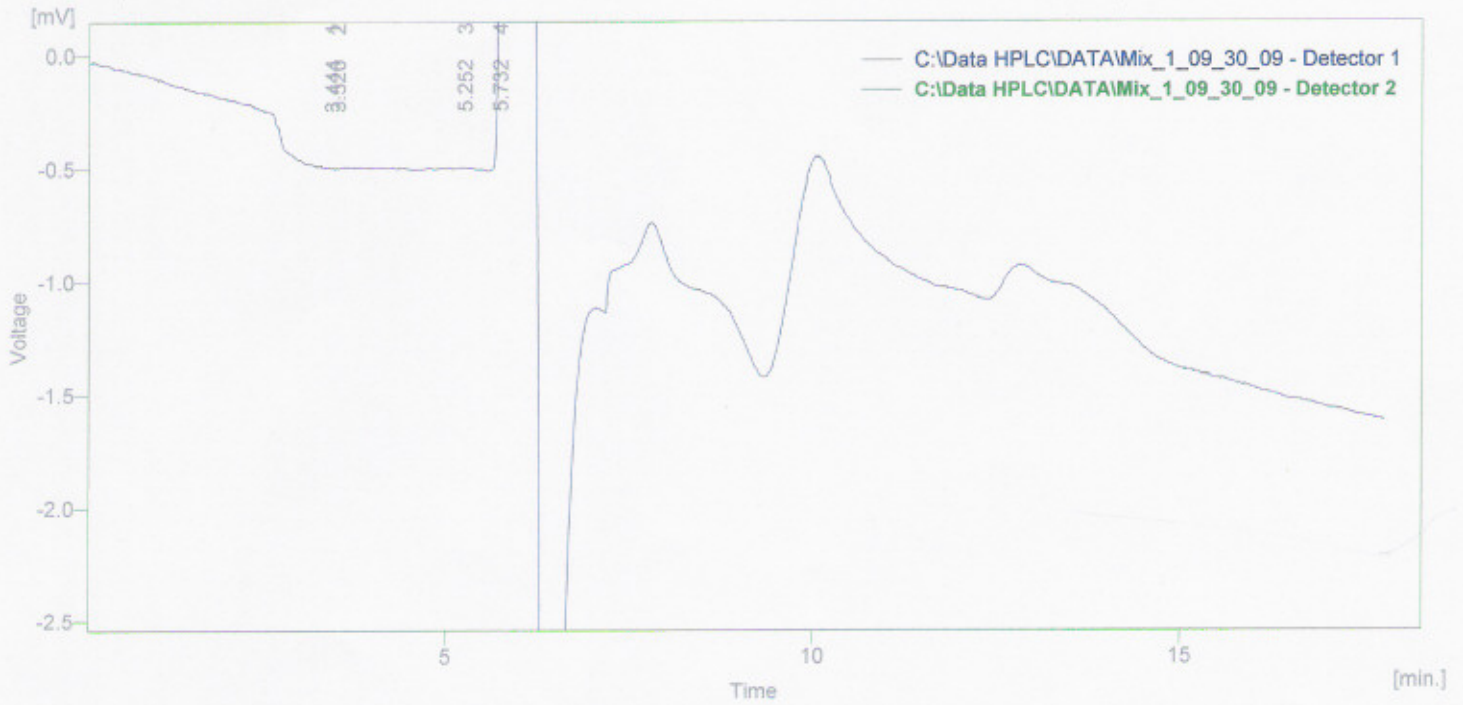
Result Table (Uncal - C:\Data HPLC\DATA\iodoindole\_xylene\_mix\_09\_30\_09 - Detector 2)

	Reten. Time [min]	Area [mV.s]	Height [mV]	Area [%]	Height [%]	W05 [min]
1	4.776	3320.250	274.982	100.0	100.0	0.16
	Total	3320.250	274.982	100.0	100.0	

50°C / 30 min → 10°C / min → 150°C / 20 min



HPLC 1.0 ml/min



Result Table (Uncal - C:\Data HPLC\DATA\Mix\_1\_09\_30\_09 - Detector 1)

	Reten. Time [min]	Area [mV.s]	Height [mV]	Area [%]	Height [%]	W05 [min]
1	5.800	78.278	7.600	16.4	41.8	0.18
2	5.952	138.512	8.099	29.1	44.5	0.25
3	7.796	220.260	1.693	46.3	9.3	1.69
4	10.032	38.890	0.791	8.2	4.4	1.03
	Total	475.940	18.183	100.0	100.0	

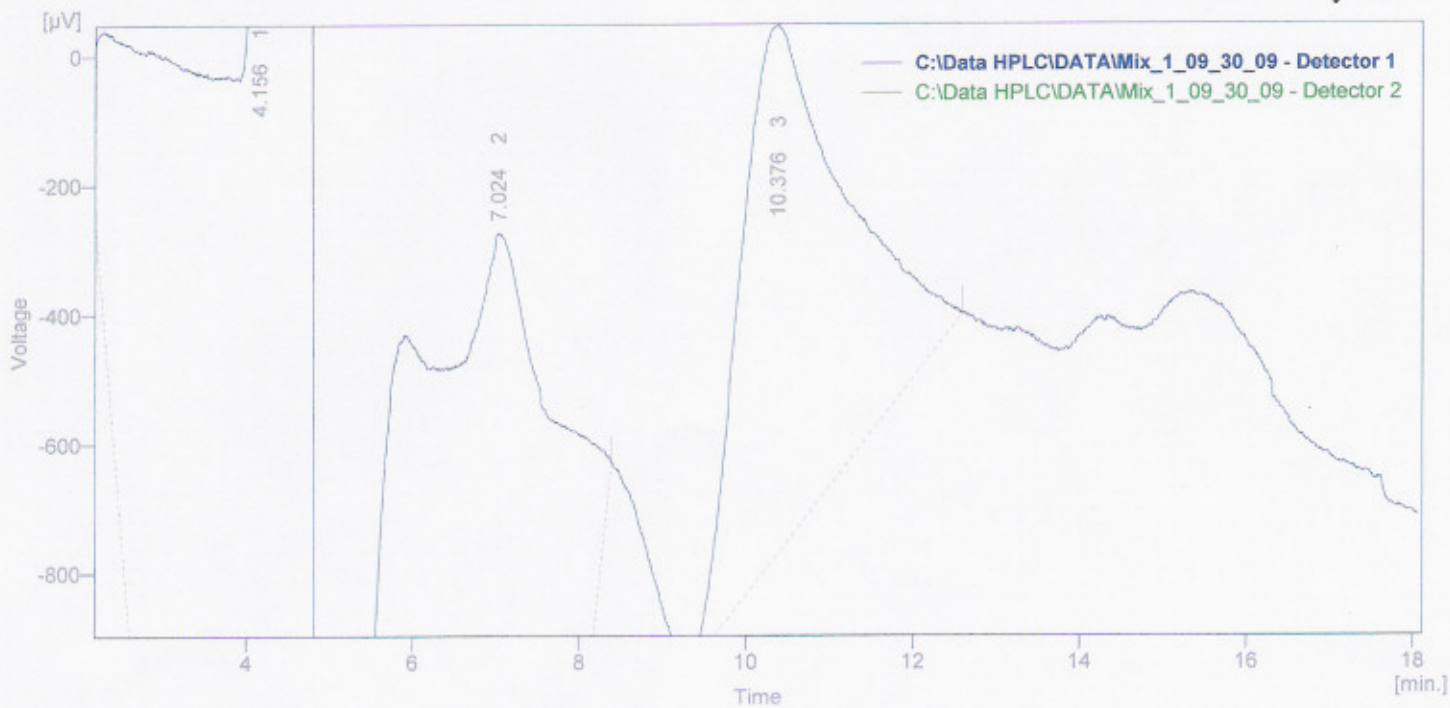
Result Table (Uncal - C:\Data HPLC\DATA\Mix\_1\_09\_30\_09 - Detector 2)

	Reten. Time [min]	Area [mV.s]	Height [mV]	Area [%]	Height [%]	W05 [min]
1	3.444	4060.426	1069.458	39.8	49.8	0.07
2	3.520	6074.591	1069.554	59.5	49.8	0.09
3	5.252	51.783	7.781	0.5	0.4	0.09
4	5.732	19.871	2.750	0.2	0.1	0.10
	Total	10206.670	2149.542	100.0	100.0	



HPLC

0.7 ml/min



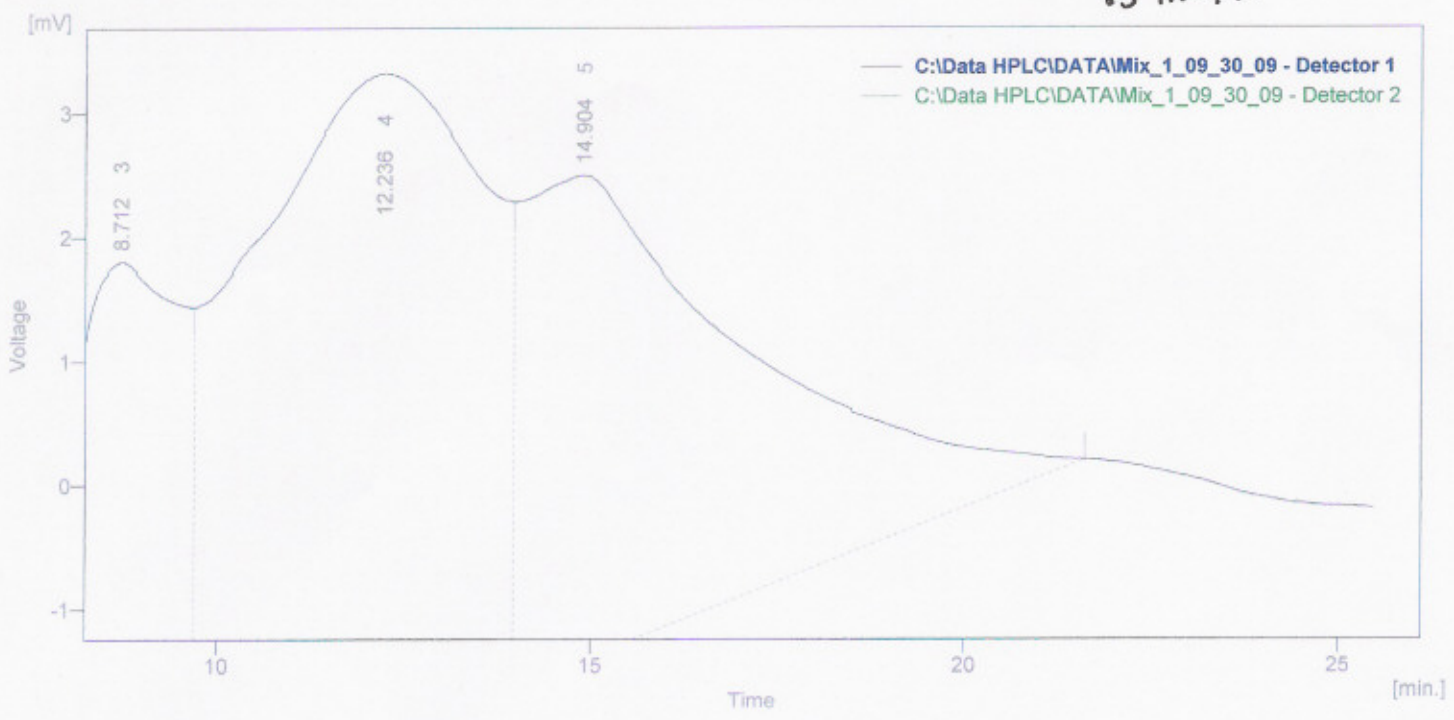
Result Table (Uncal - C:\Data HPLC\DATA\Mix\_1\_09\_30\_09 - Detector 1)

	Reten. Time [min]	Area [mV.s]	Height [mV]	Area [%]	Height [%]	W05 [min]
1	4.156	584.442	9.821	56.4	77.1	0.69
2	7.024	380.493	2.098	36.7	16.5	2.92
3	10.376	72.185	0.819	7.0	6.4	2.24
	Total	1037.121	12.738	100.0	100.0	

Result Table (Uncal - C:\Data HPLC\DATA\Mix\_1\_09\_30\_09 - Detector 2)

	Reten. Time [min]	Area [mV.s]	Height [mV]	Area [%]	Height [%]	W05 [min]
1	2.988	3.007	1.192	3.512e-02	0.1	0.04
2	3.112	1817.603	614.143	21.2	36.4	0.05
3	3.272	6707.365	1069.419	78.3	63.4	0.10
4	8.212	29.951	1.262	0.3	0.1	0.40
5	9.544	6.312	0.347	0.1	2.055e-02	0.35
	Total	8564.239	1686.363	100.0	100.0	

Hexane : IPA  
 9 : 1  
 0.5 mL/m



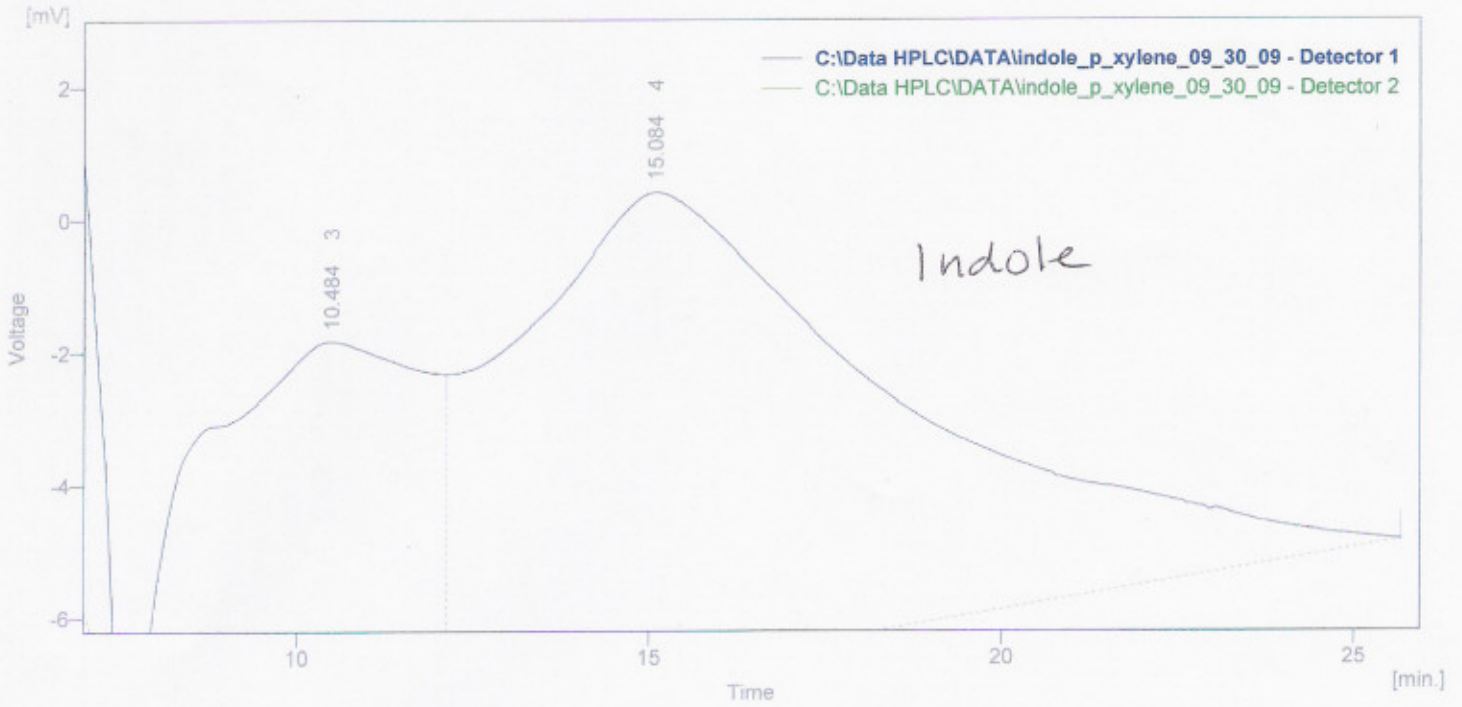
Result Table (Uncal - C:\Data HPLC\DATA\Mix\_1\_09\_30\_09 - Detector 1)

	Reten. Time [min]	Area [mV.s]	Height [mV]	Area [%]	Height [%]	W05 [min]
1	6.480	220.998	7.430	7.5	25.7	0.54
2	6.860	257.489	7.524	8.7	26.0	0.56
3	8.712	460.052	4.694	15.5	16.2	1.74
4	12.236	1205.962	5.369	40.7	18.6	4.27
5	14.904	819.040	3.899	27.6	13.5	4.70
	Total	2963.540	28.916	100.0	100.0	

Result Table (Uncal - C:\Data HPLC\DATA\Mix\_1\_09\_30\_09 - Detector 2)

	Reten. Time [min]	Area [mV.s]	Height [mV]	Area [%]	Height [%]	W05 [min]
1	3.556	2.288	0.489	2.614e-02	0.1	0.06
2	4.124	8716.955	936.354	99.6	99.8	0.12
3	18.600	25.570	0.810	0.3	0.1	0.58
4	19.792	10.247	0.561	0.1	0.1	0.29
	Total	8755.060	938.213	100.0	100.0	

0.5 mL/min HPLC



Result Table (Uncal - C:\Data HPLC\DATA\indole\_p\_xylene\_09\_30\_09 - Detector 1)

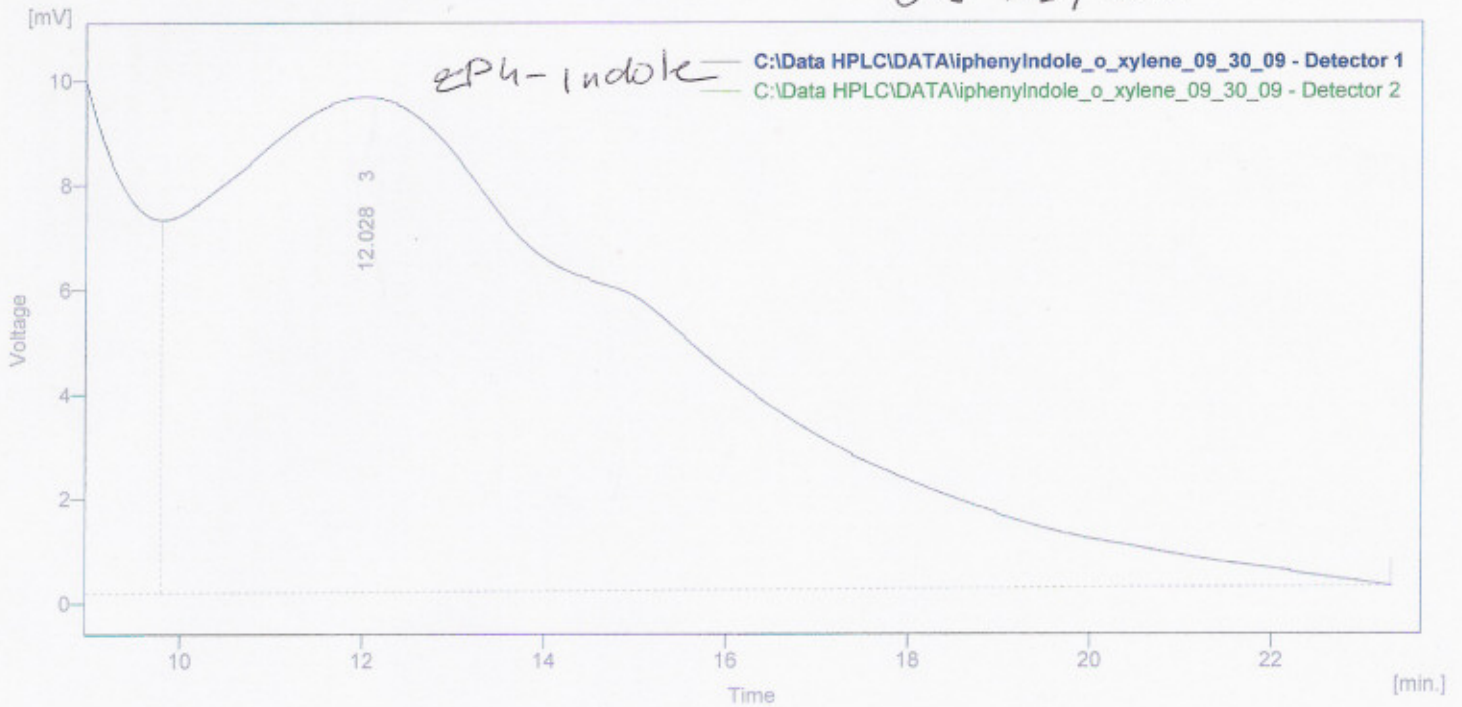
	Reten. Time [min]	Area [mV.s]	Height [mV]	Area [%]	Height [%]	W05 [min]
1	1.068	39.685	0.509	0.9	2.3	1.36
2	6.476	469.361	8.403	10.3	38.3	0.86
3	10.484	1283.941	5.813	28.2	26.5	3.99
4	15.084	2761.996	7.197	60.6	32.8	7.10
	Total	4554.983	21.921	100.0	100.0	

Result Table (Uncal - C:\Data HPLC\DATA\indole\_p\_xylene\_09\_30\_09 - Detector 2)

	Reten. Time [min]	Area [mV.s]	Height [mV]	Area [%]	Height [%]	W05 [min]
1	3.476	0.316	0.159	5.803e-03	2.108e-02	0.04
2	3.552	13.299	3.634	0.2	0.5	0.06
3	3.924	4745.506	729.882	87.1	96.5	0.16
4	18.132	888.514	22.507	12.6	3.0	0.38
	Total	5447.636	756.182	100.0	100.0	



0.5 mL/min IPA: hex = 1:9



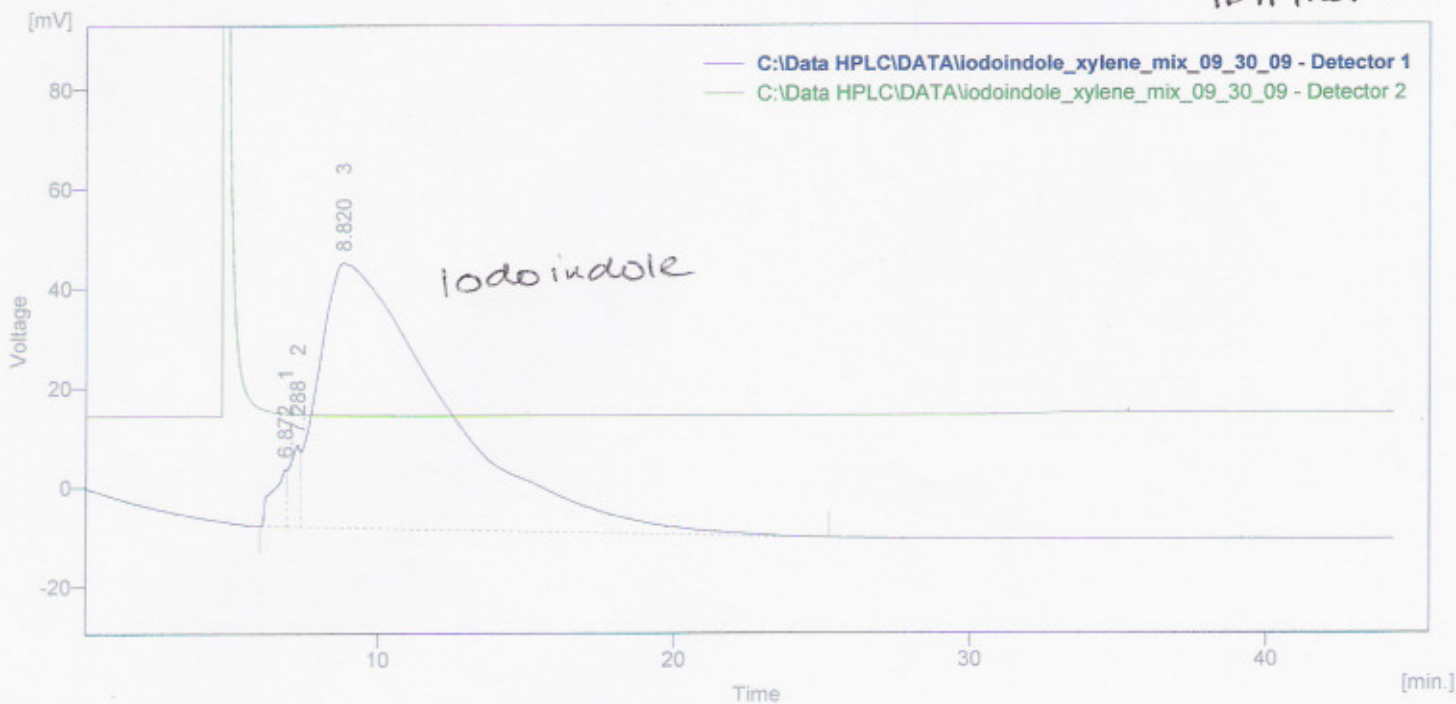
Result Table (Uncal - C:\Data HPLC\DATA\iphenylndole\_o\_xylene\_09\_30\_09 - Detector 1)

	Reten. Time [min]	Area [mV.s]	Height [mV]	Area [%]	Height [%]	W05 [min]
1	6.488	2237.340	18.100	32.9	45.1	1.06
2	8.528	1199.516	12.571	17.6	31.3	2.07
3	12.028	3367.014	9.471	49.5	23.6	5.83
	Total	6803.871	40.142	100.0	100.0	

Result Table (Uncal - C:\Data HPLC\DATA\iphenylndole\_o\_xylene\_09\_30\_09 - Detector 2)

	Reten. Time [min]	Area [mV.s]	Height [mV]	Area [%]	Height [%]	W05 [min]
1	3.608	1.572	0.382	2.446e-02	4.895e-02	0.06
2	4.188	6404.113	778.959	99.7	99.8	0.12
3	19.832	19.710	1.048	0.3	0.1	0.30
	Total	6425.394	780.388	100.0	100.0	

0.5 mL/min HPLC  
IDA/hex = 1:9



Result Table (Uncal - C:\Data HPLC\DATA\iodoindole\_xylene\_mix\_09\_30\_09 - Detector 1)

	Reten. Time [min]	Area [mV.s]	Height [mV]	Area [%]	Height [%]	W05 [min]
1	6.872	376.770	11.584	2.3	14.2	0.72
2	7.288	403.837	16.580	2.4	20.4	0.47
3	8.820	15755.280	53.180	95.3	65.4	4.22
Total		16535.888	81.343	100.0	100.0	

Result Table (Uncal - C:\Data HPLC\DATA\iodoindole\_xylene\_mix\_09\_30\_09 - Detector 2)

	Reten. Time [min]	Area [mV.s]	Height [mV]	Area [%]	Height [%]	W05 [min]
1	4.776	3320.250	274.982	100.0	100.0	0.16
Total		3320.250	274.982	100.0	100.0	